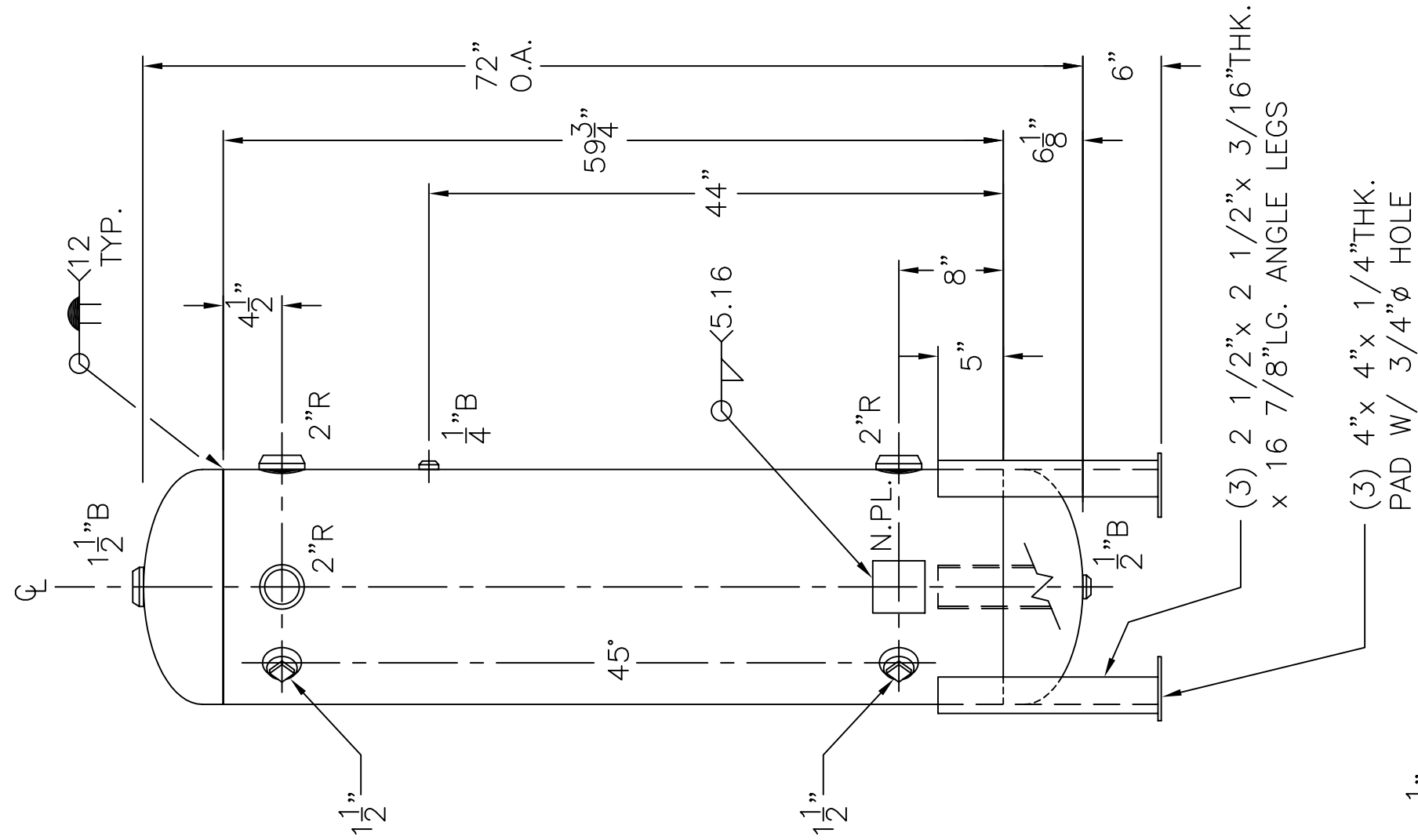
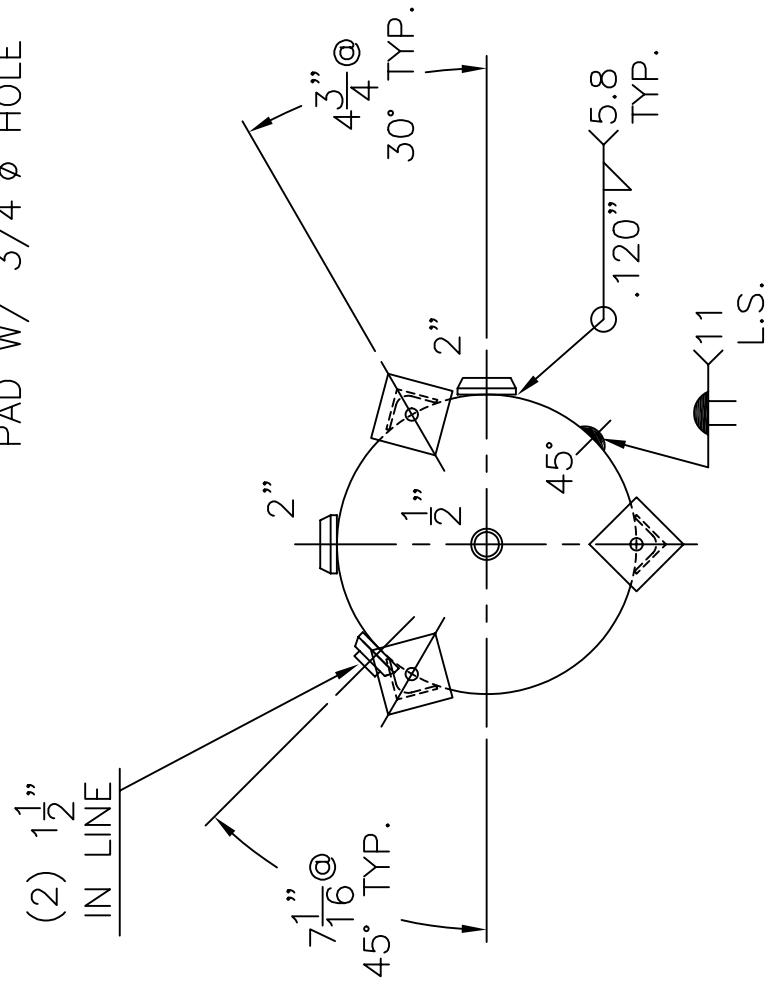


1 1/2" R W/ C.I. PLUG
 INSP. OPENING
 (2) PLC'S.



(3) 2 1/2" x 2 1/2" x 3/16" THK.
 x 16 7/8" LG. ANGLE LEGS
 (3) 4" x 4" x 1/4" THK.
 PAD W/ 3/4" Ø HOLE



NOTE: 1) HYDRO @ 327 PSIG. MIN.

SHELL / HEADS	.135" SA-414-G 2:1 S.E.	18-VC-73-L	REV. 4-4-06
	JOGGLE		DATE: 12-28-84
		FOR: HANSON STANDARD	
		VERT. AIR TANK	
	.164" SA-414-G		
		INSIDE: UNPAINTED	
M.A.W.P.	250 PSIG. @ 400 °F		
M.D.M.T.	-20 °F @ 250 PSIG.	OUTSIDE: PRIME	
ASME. SECTION VIII	DIV. 1, 2004 ADD 2005	LEG-ZONE 4-15 KM.	
X-RAY:	RT-NO	BY: J.G.	SCALE: 3/4"=12"
GALLONS:	73	WT. 225 LBS.	ROY E. HANSON JR. MFG. 1924 COMPTON AVE. LOS ANGELES, CA 90011
SERIAL NO.			
N.B.			