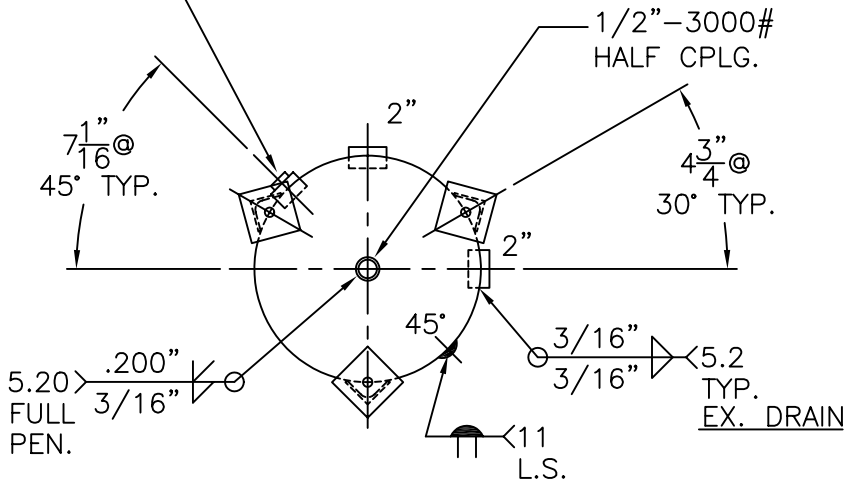


NOTE: 1) HYDRO @ 521 PSIG. MIN.

SHELL / HEADS	
.200" SA-455 2:1 S.E.	
(.195" MIN.) JOGGLE -.209 OFFSET	
.245" SA-455	
M.A.W.P. 400 PSIG. @ 400 °F	
M.D.M.T. -20 °F @ 400 PSIG.	
ASME SECTION VIII DIV. 1, 2004 ADD 2005	
X-RAY: RT-NO	
GALLONS: 73	WT. 314 LBS.
SERIAL NO.	
N.B.	

(2) 1 1/2" IN LINE



18-VJ-73-1

REV. 9-22-06
DATE: 12-23-84

FOR: HANSON STANDARD
VERT. AIR TANK

INSIDE: UNPAINTED

OUTSIDE: PRIME

LEG-ZONE 4-15 KM.

BY: J.G. SCALE: 3/4" = 12"

ROY F. HANSON JR. MFG.

1600 E. WASHINGTON BLVD.
LOS ANGELES, CA 90021