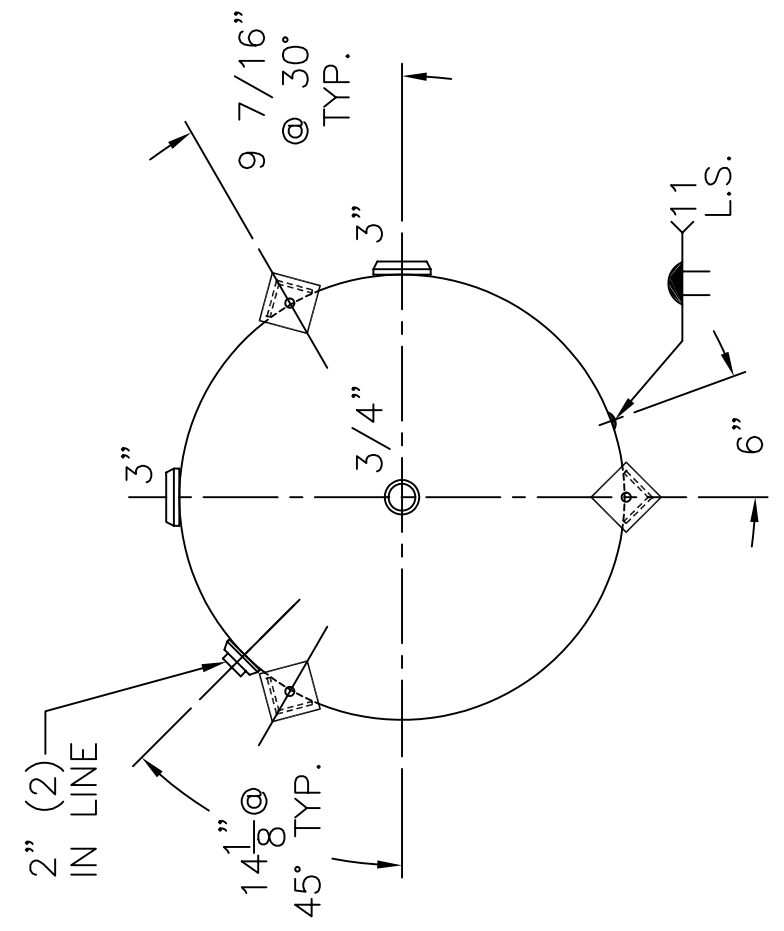
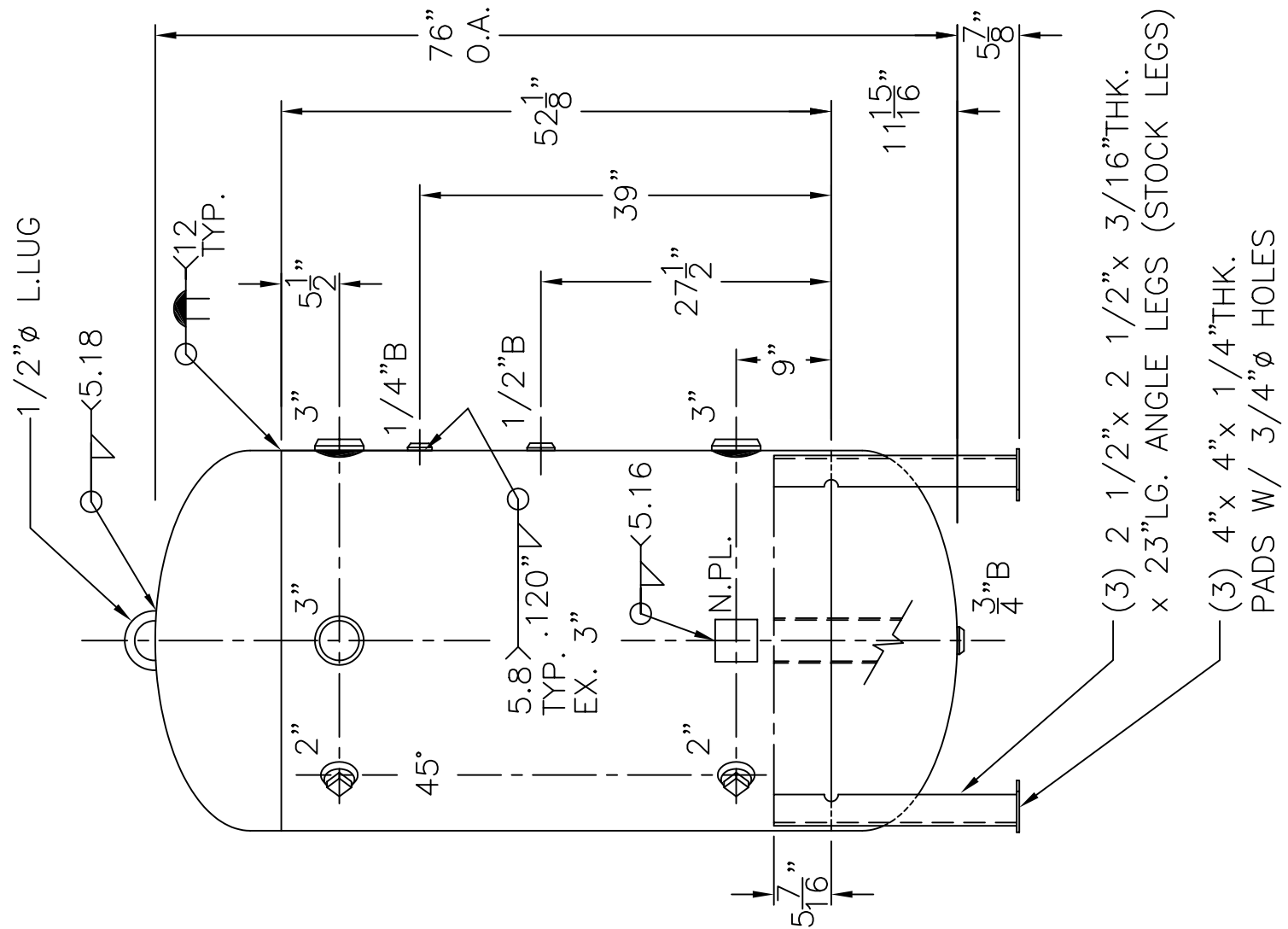


2" B W/ C.I. PLUG INSP. OPENING (2) PLC'S.



NOTE: 1) HYDRO @ 180 PSIG. MIN.

HEADS	.182" SA-455 2:1 S.E.	36-VQ-300-L	REV. 9-16-05	
	JOGGLE		DATE: 3-27-94	
SHELL	.166" SA-414-G	FOR: HANSON STANDARD VERT. AIR TANK		
		INSIDE: UNPAINTED		
M.A.W.P.	137 PSIG. @ 400 °F	OUTSIDE: PRIME		
M.D.M.T.	-20 °F @ 137 PSIG.	CAD-"B" SIZE UNDER "STD"-SERIES		
ASME. SECTION VIII	DIV. 1, 2004 ADD. 2004	BY: E.S.	SCALE: 3/4" = 12"	
X-RAY:	RT-NO	ROY E. HANSON JR. MFG. 1924 COMPTON AVE. LOS ANGELES, CA 90011		
GALLONS:	300			WT. 489 LBS.
SERIAL NO.				
N.B.				