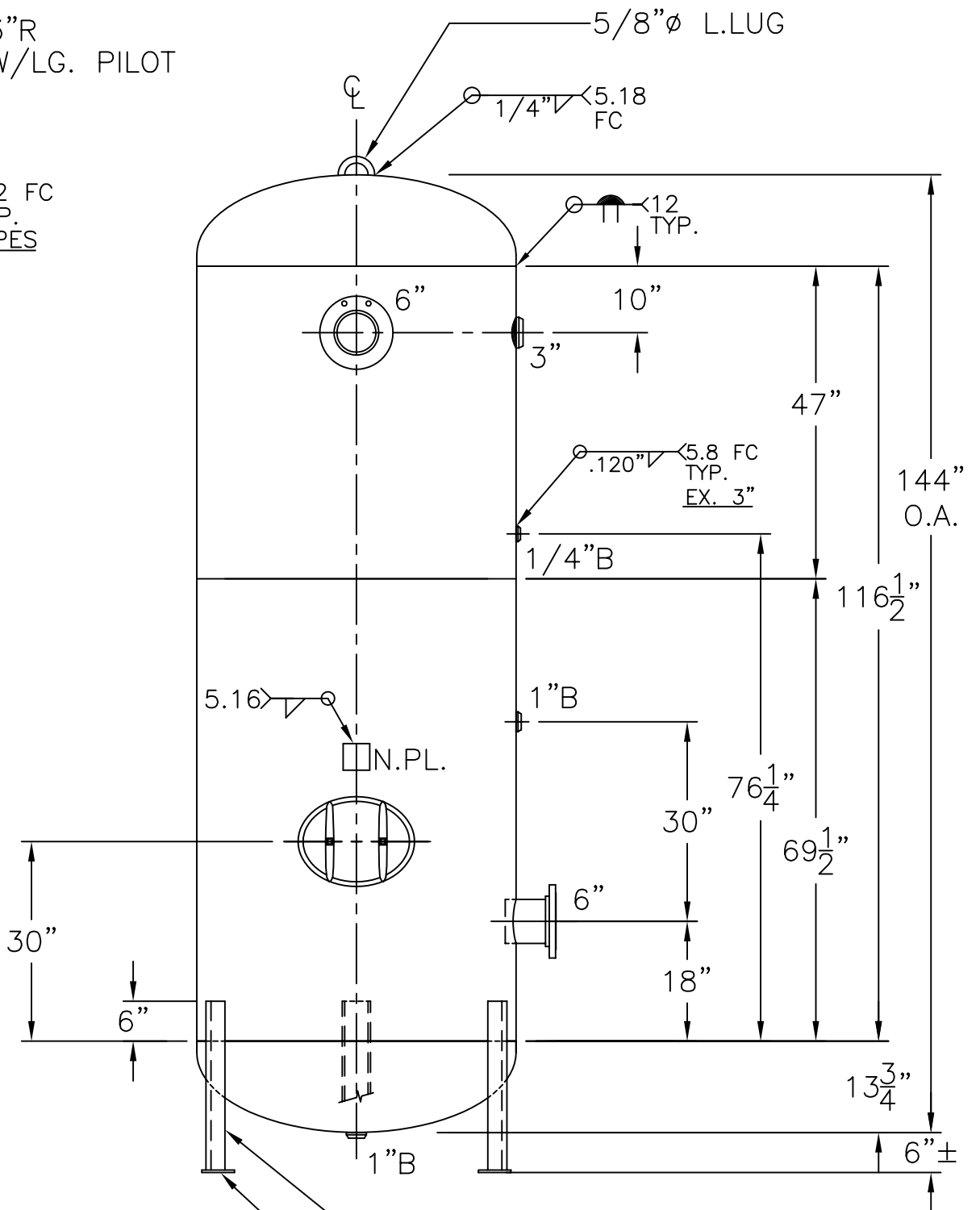
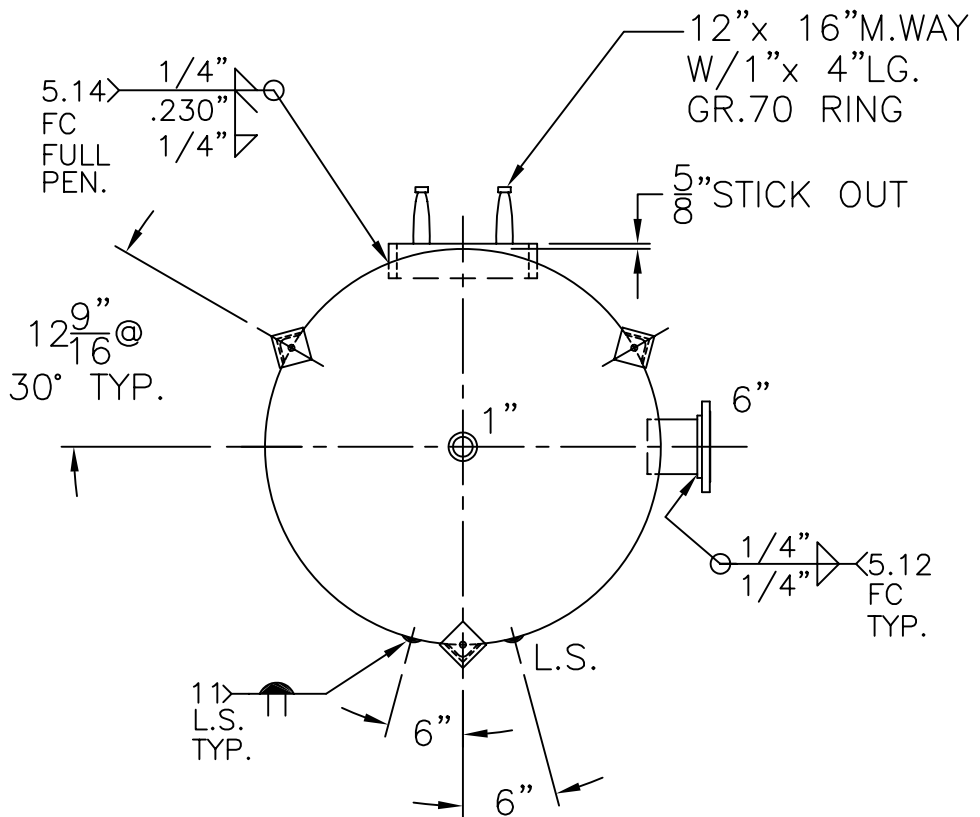


6"-150# R.F.S.O.
 FLG. W/SCH 80
 PIPE x 7 5/8"LG.
 (2) PLC'S



(3) 3" x 3" x 1/4" THK.
 x 25 3/8" LG. ANGLE LEGS

(3) 4" x 4" x 3/8" THK.
 PAD W/3/4" Ø HOLE
 FOR 1/2" Ø x 6" LG. BOLTS
 GRADE 5 OR BETTER



NOTE: 1) HYDRO @ 217 PSIG. MIN.

SHELL / HEADS	.245" SA-455 2:1 S.E. (.218" MIN.) JOGGLE
M.A.W.P.	165 PSIG. @ 400 °F
M.D.M.T.	-20 °F @ 165 PSIG.
ASME SECTION VIII	DIV. 1, 2004 ADD 2006
X-RAY:	RT-4 SPOT L.S. ONLY
GALLONS:	1060 WT. 1872 LBS.
SERIAL NO.	
N.B.	

48-VM-1060-L	REV. 5-15-07
FOR: HANSON STANDARD	DATE: 12-13-79
VERT. AIR TANK	
INSIDE: UNPAINTED	
OUTSIDE: PRIME	
CAD "B" SIZE UNDER "STD"-SERIES	
BY: J.G.	SCALE: 1/2" = 12"
ROY E. HANSON JR. MFG.	
1600 E. WASHINGTON BLVD.	
LOS ANGELES, CA 90021	