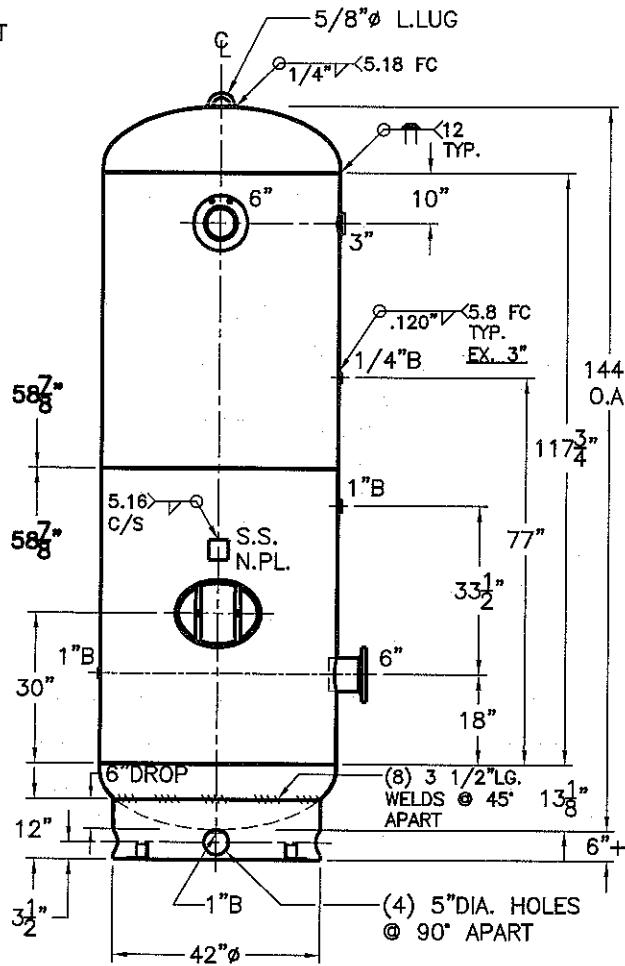


6" - 150# R.F.S.O.
 FLG. W/ SCH. 80
 SA-106-B
 PIPE x 7 5/8" LG.
 (2) PLC'S.



SHELL / HEADS	
JOGGLE	.250" SA-455 2:1 S.E.
	NOTE: 1) HYDRO @ 195 PSIG. MIN.
	2) IMPACT TESTING NOT REQUIRED. UG-20(F)
	3) DRAIN FOR HORIZONTAL MOUNT ADDED AFTER SERIAL #423,136
	48-VP-1060-R
REV	7-7-14
DATE	3-6-12
FOR: HANSON STANDARD	
VERT. AIR TANK	
SURFACE AREA = 160.4 SQ. FT.	
UW-21(b)	
INSIDE: UNPAINTED	
OUTSIDE: SHOP PRIME	
CAD "B" SIZE UNDER "STD"-SERIES	
BY: E.S.	SCALE: 1/2"=12"
ROY E. HANSON JR. MFG.	
1600 E. WASHINGTON BLVD.	
LOS ANGELES, CA 90021	

