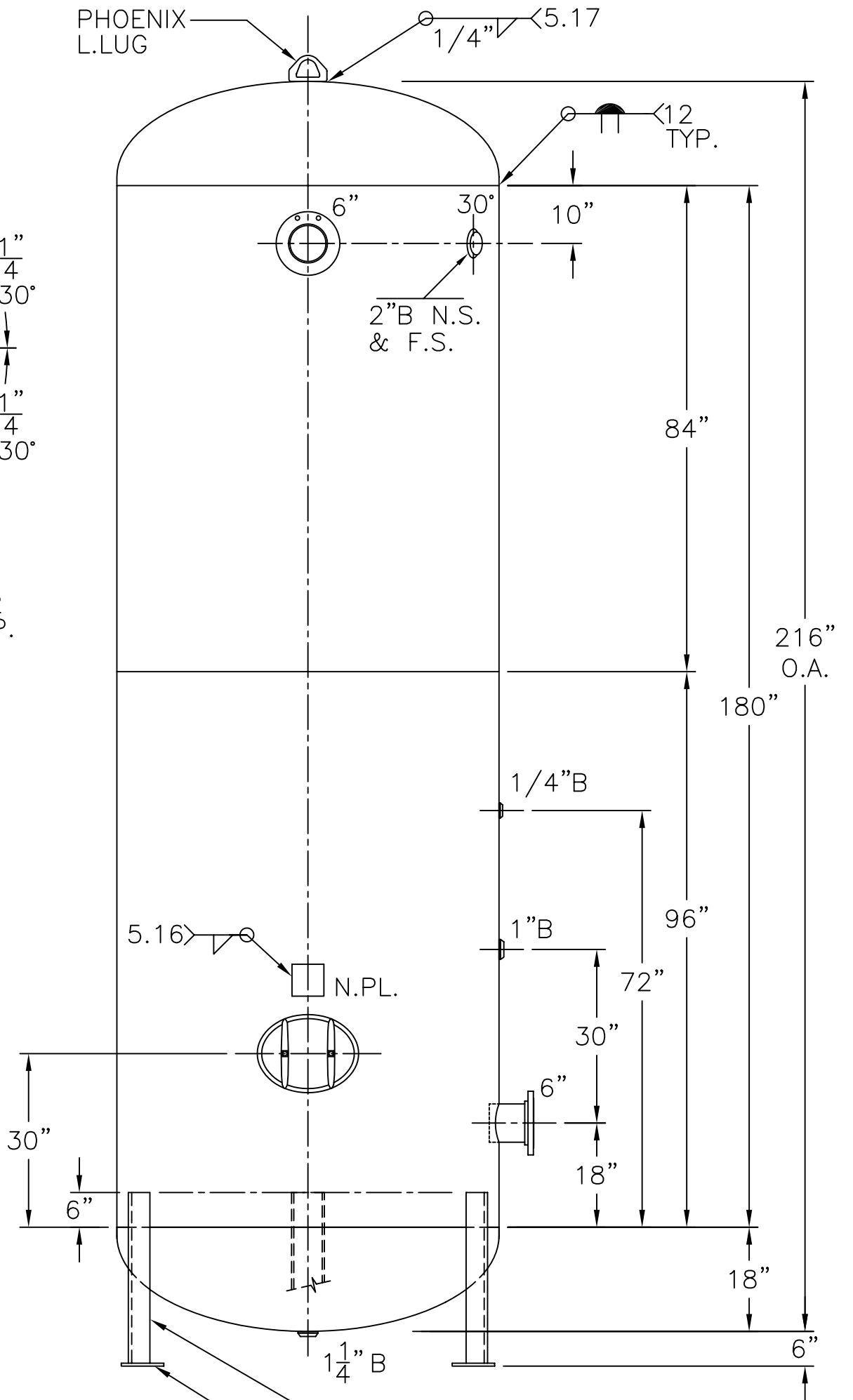


6"-150# R.F.S.O.  
 FLG. W/SCH 80  
 PIPE x 7 5/8"LG.  
 (2) PLC'S



(3) 4"x 4" x 3/8"THK.  
 x 29 1/2"LG. ANGLE LEGS

(3) 6"x 6"x 1/2"THK.  
 PAD W/1"Ø HOLE

12"x 16" M.WAY  
 W/1"x 3"LG.  
 GR.70 RING

5/8"STICK OUT

5.14  
 FULL  
 PEN. 5/16"

17 1/4" @  
 30° TYP.

1/4" TYP.  
 1/4"

5.8 TYP.

L.S.

NOTE. 1) HYDRO @ 215 PSIG. MIN.

SHELL / HEADS		66-VM-3000-L	
.337" SA-455 2:1 S.E. (.253" MIN.)		REDR.12-6-02	
M.A.W.P. 165 PSIG. @ 400 °F		DATE: 4-27-81	
M.D.M.T. -20 °F 165 PSIG.		FOR: HANSON STANDARD	
ASME. SECTION VIII DIV. 1, 2001 ADD 2002		VERT. AIR TANK	
X-RAY: RT-4 SPOT L.S. & HDS. G.S.		INSIDE: UNPAINTED	
GALLONS: 3000 WT. 4689 LBS.		OUTSIDE: PRIME	
SERIAL NO.		CAD "B" SIZE UNDER "STD"-SERIES	
N.B.		BY: J.G. SCALE: 1/2"=12"	
		<b>ROY E. HANSON JR. MFG.</b>	
		1924 COMPTON AVE.	
		LOS ANGELES, CA 90011	