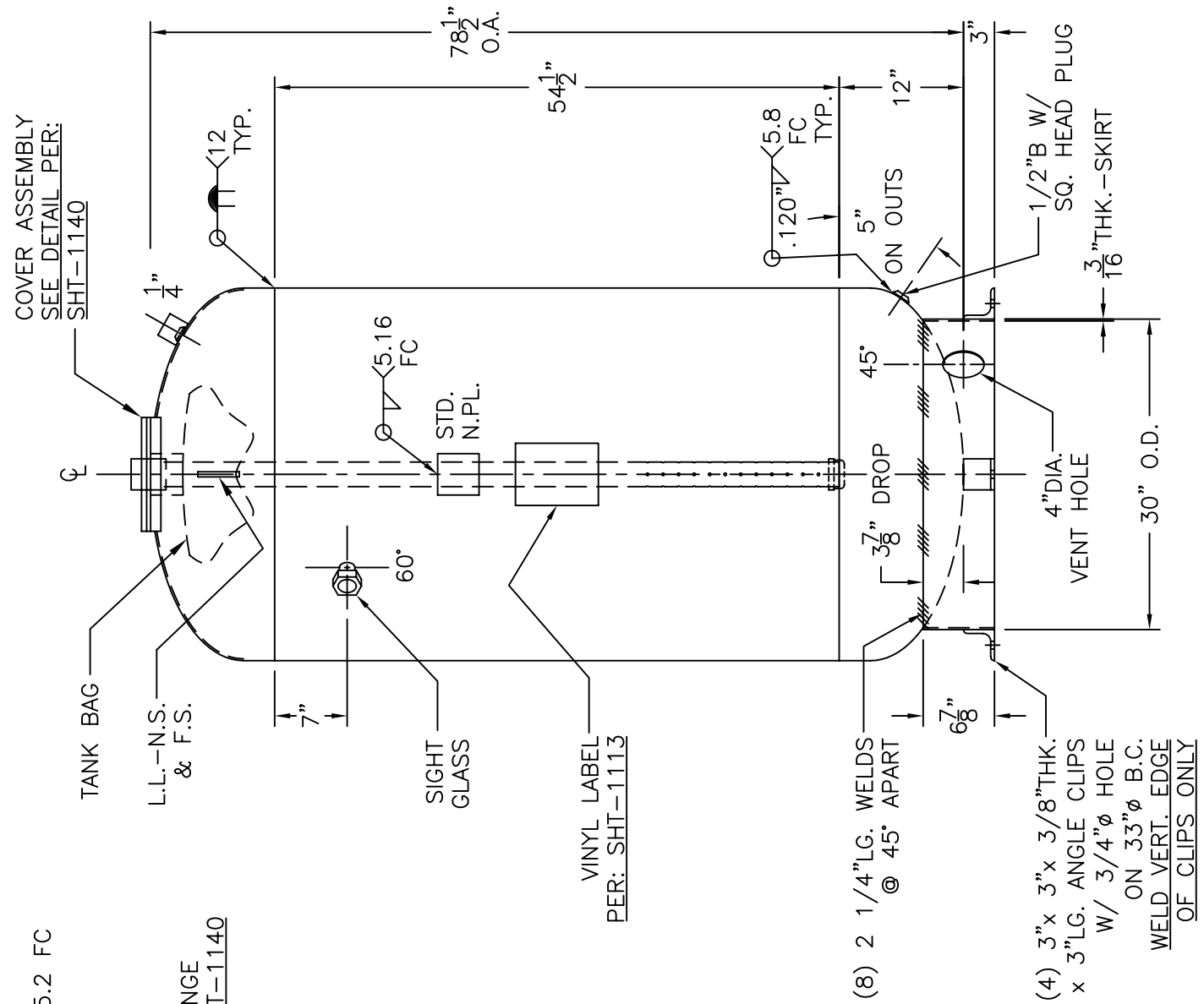


**COVER ASSEMBLY DTL.**



NOTE: 1) HYDRO @ 165 PSIG. MIN.  
2) INSPECTION OPENING, UG 46(f)(6).

SHELL / HEADS	.182" SA-455 2:1 S.E.	TB-317-R	REV.
	JOGGLE		DATE: 4-1-05
M.A.W.P. 125 PSIG. @ 240 °F	M.D.M.T. 32 °F @ 125 PSIG.	HANSON STANDARD	
		VERT. BLADDER TANK	
ASME. SECTION VIII DIV. 1, 2004 ADD. 2004		INSIDE:	UNPAINTED
X-RAY: RT-NO		OUTSIDE:	PRIMER
GALLONS: 317	WT. 637 LBS.	BY: E.S.	SCALE: 3/4"=12"
SERIAL NO.		<b>ROY E. HANSON JR. MFG.</b>	
N.B.		1924 COMPTON AVE. LOS ANGELES, CA 90011	