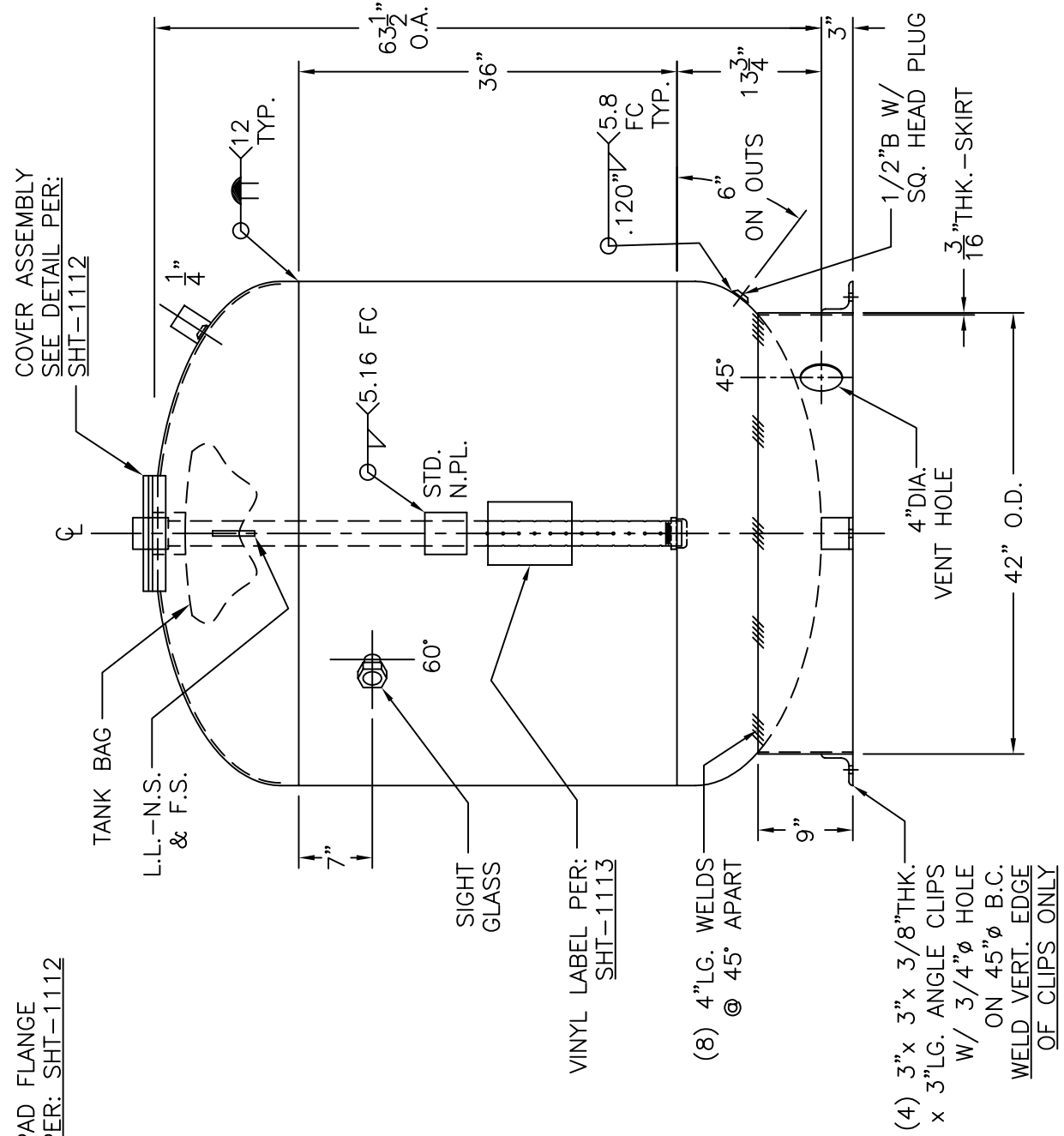


**COVER ASSEMBLY DTL.**



NOTE: 1) HYDRO @ 165 PSIG. MIN.  
2) INSPECTION OPENING, UG 46(f)(6).

SHELL / HEADS	.200" SA-455 2:1 S.E.
	JOGGLE
SHELL / HEADS	.167" SA-414-G
M.A.W.P.	125 PSIG. @ 240 °F
M.D.M.T.	32 °F @ 125 PSIG.
ASME. SECTION VIII DIV. 1, 2001 ADD. 2003	
X-RAY: RT-4 SPOT L.S. ONLY	
GALLONS:	422
WT.	780 LBS.
SERIAL NO.	
N.B.	

TB-422-R	REV.
	DATE: 4-1-05
HANSON STANDARD	
VERT. BLADDER TANK	
INSIDE:	UNPAINTED
OUTSIDE:	PRIMER
BY: E.S.	SCALE: 3/4"=12"
<b>ROY E. HANSON JR. MFG.</b>	
1924 COMPTON AVE. LOS ANGELES, CA 90011	