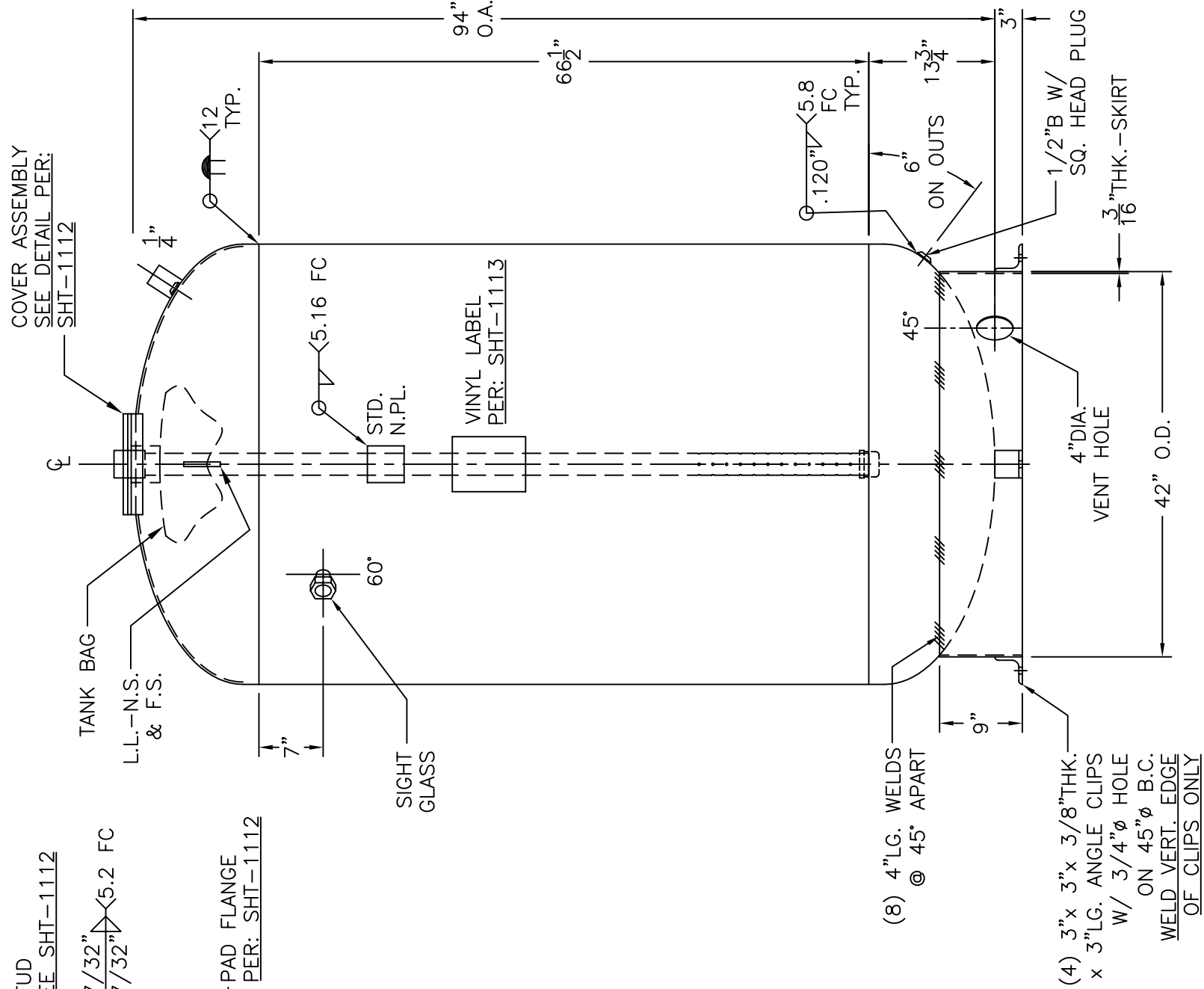


**COVER ASSEMBLY DTL.**



NOTE: 1) HYDRO @ 165 PSIG. MIN.  
2) INSPECTION OPENING, UG 46(f)(6).

SHELL / HEADS	.200" SA-455 2:1 S.E.	TB-660-R	REV.
	JOGGLE		DATE: 4-1-05
SHELL / HEADS	.167" SA-414-G	HANSON STANDARD	
		VERT. BLADDER TANK	
M.A.W.P. 125 PSIG. @ 240 °F		INSIDE: UNPAINTED	
M.D.M.T. 32 °F @ 125 PSIG.		OUTSIDE: PRIMER	
ASME. SECTION VIII DIV. 1, 2004 ADD. 2004		BY: E.S. SCALE: 3/4"=12"	
X-RAY: RT-4 SPOT L.S. ONLY		<b>ROY E. HANSON JR. MFG.</b> 1924 COMPTON AVE. LOS ANGELES, CA 90011	
GALLONS: 660 WT. 1055 LBS.			
SERIAL NO.			
N.B.			