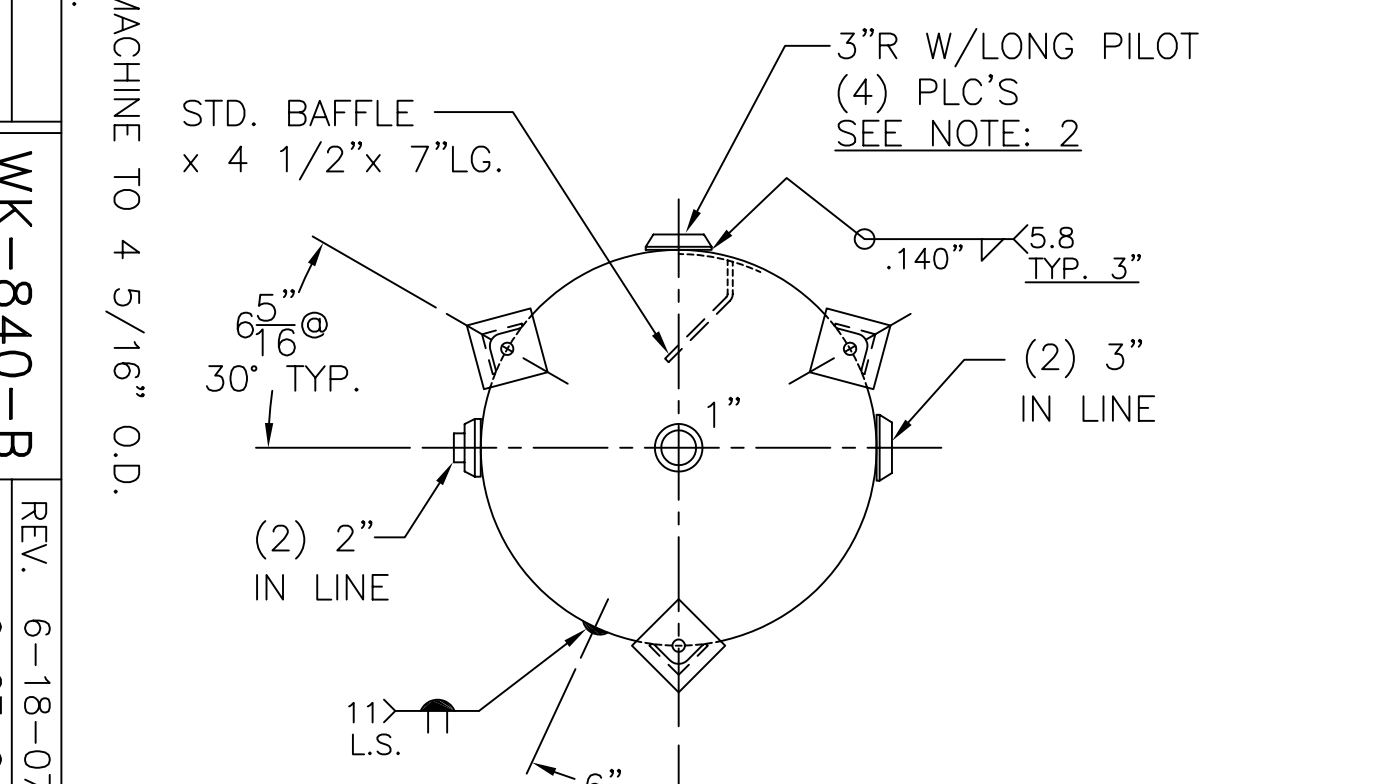


NOTE: 1) HYDRO @ 197 PSIG. MIN.  
 2) 3"R W/LONG PILOT - MACHINE TO 4 5/16" O.D.



SHELL / HEADS		M.A.W.P. 150 PSIG. @ 250 °F	
JOGGLE		M.D.M.T. 0 °F @ 150 PSIG.	
.135" SA-414-G		ASME SECTION VIII DIV. 1, 2007 ADD 2007	
		X-RAY: RT-NO	
		GALLONS: 115 WT. 228 LBS.	
		SERIAL NO.	
		N.B.	
FOR: -		WK-840-B	
VERT. WATER (BUFFER) TANK		REV. 6-18-07	
INSIDE: UNPAINTED		DATE: 9-27-04	
OUTSIDE: PRIME			
LEG-ZONE 4-15 KM.			
BY: J.G./FRED		SCALE: 1"=12"	
ROY E. HANSON JR. MFG.			
1600 E. WASHINGTON BLVD.			
LOS ANGELES, CA 90021			