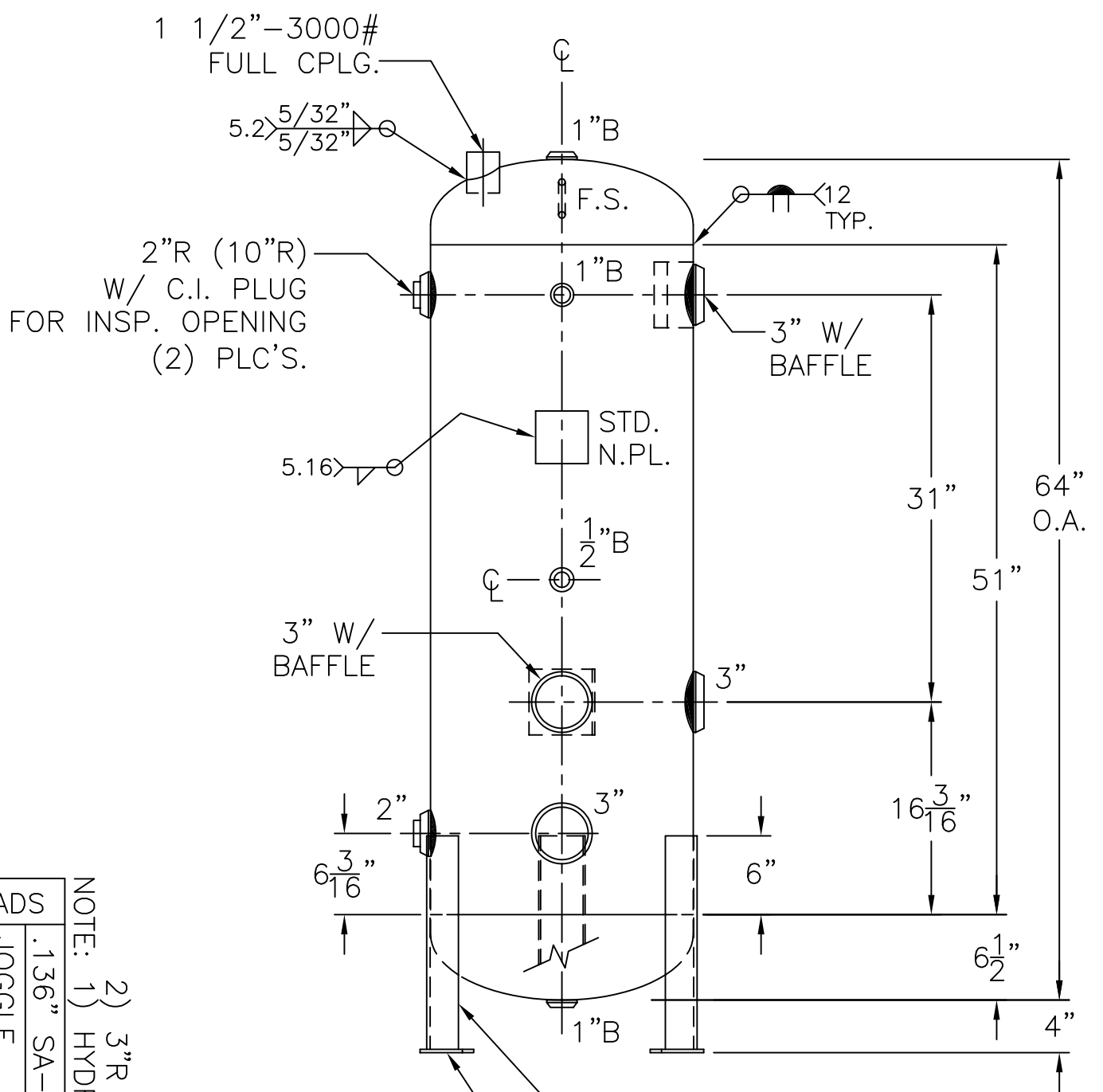
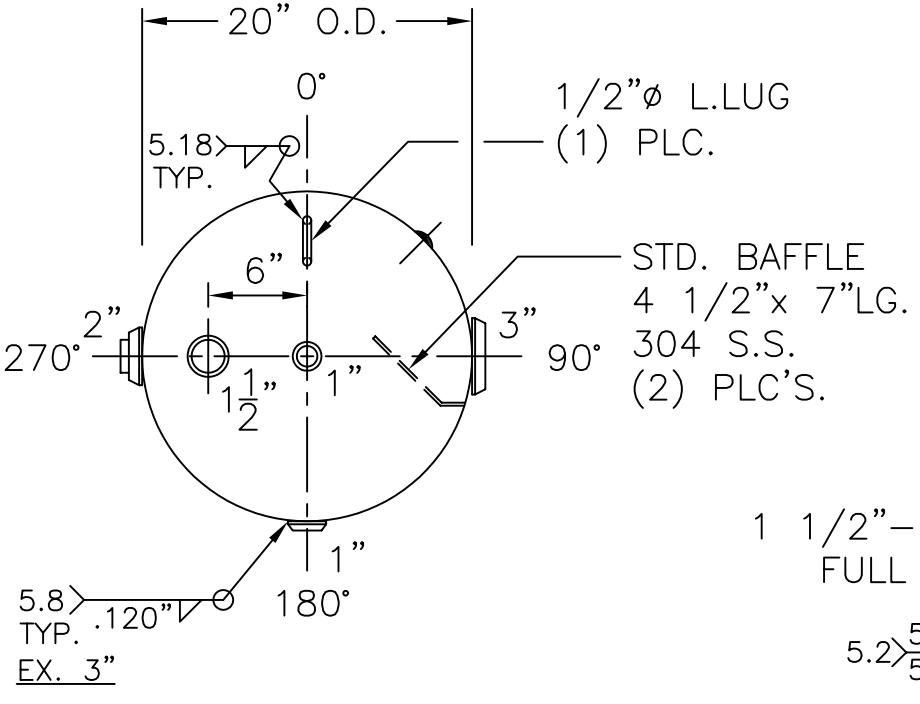
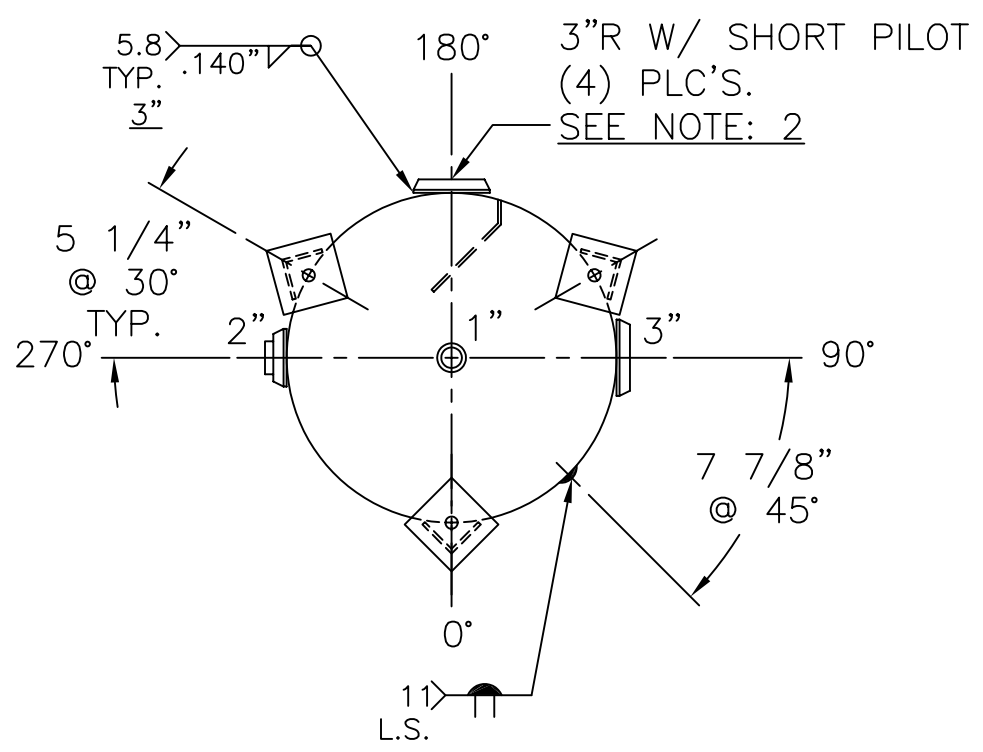


DATE	BY
8-30-13	ES



(3) 2 1/2" x 2 1/2" x 3/16" THK. x 16 1/4" LG. ANGLE LEGS
(3) 4" x 4" x 1/4" THK. PADS W/ 3/4"Ø HOLE



NOTE: 1) HYDRO @ 195 PSIG. MIN.
2) 3"R W/ SHORT PILOT - MACHINE TO 4 5/16" O.D.

SHELL / HEADS		M.A.W.P. 150 PSIG. @ 250 °F		M.D.M.T. -20 °F @ 150 PSIG.		ASME SECTION VIII DIV. 1, 2013		X-RAY: RT-NO		GALLONS: 80		WT. 234 LBS.		SERIAL NO.		N.B.	
.136" SA-414-G 2:1 S.E.		.149" SA-414-G															
JOGGLE		FOR: VERT. BUFFER TANK		INSIDE: UNPAINTED		OUTSIDE: PRIME		LEG-ZONE 4-15 KM.		BY: E.S.		SCALE: 1"=12"		REV. 12-24-13		DATE: 11-1-05	
WL-309-B		1600 E. WASHINGTON BLVD.		LOS ANGELES, CA 90021		ROY E. HANSON JR. MFG.											