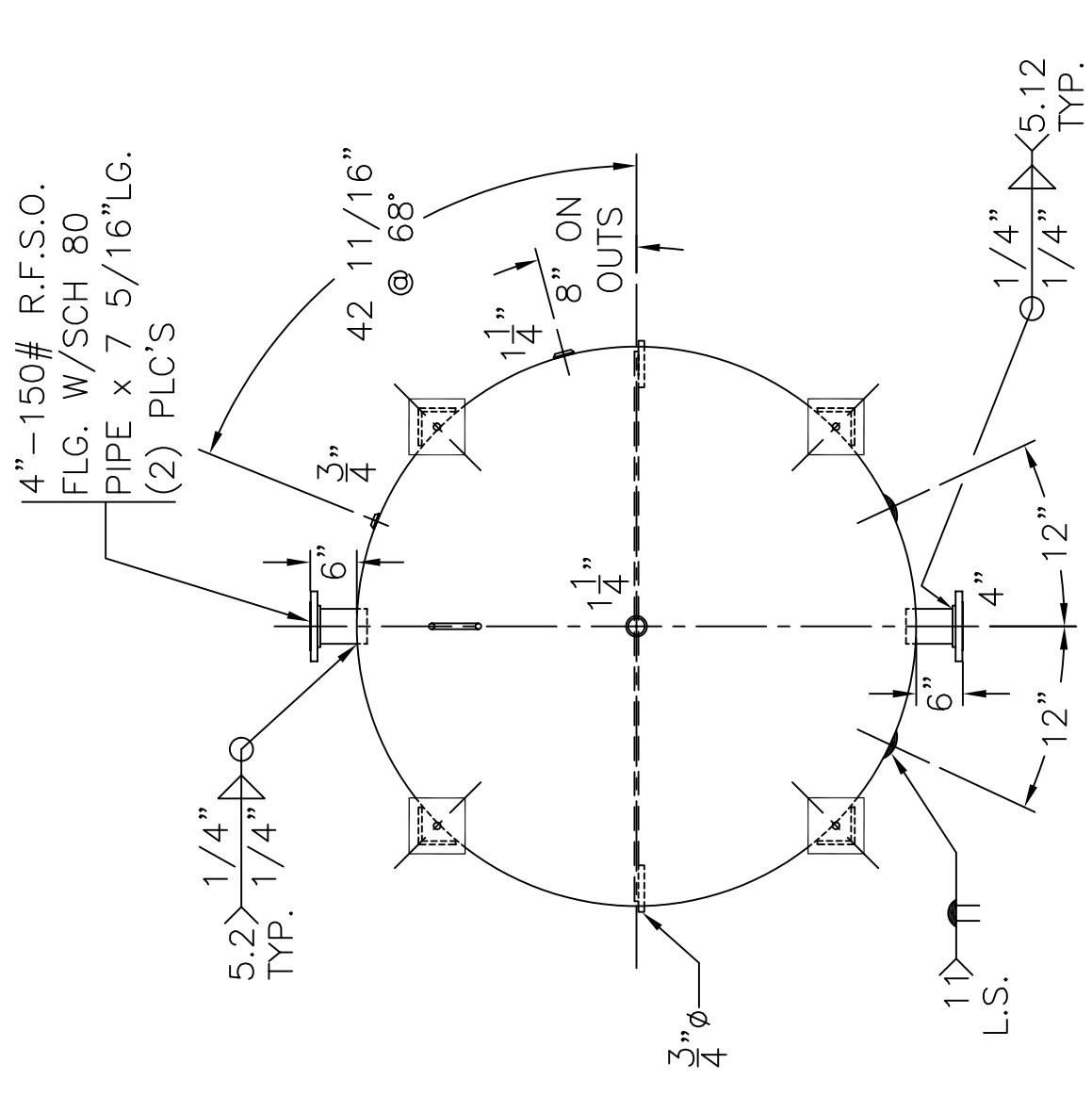


NOTE: 1) HYDRO @ 166 PSIG. MIN.
 2) WELD 3/4" ϕ ROUND BARS TO SHELL AFTER HEADS ARE IN PLACE.
 3) WELDS TO, OR JOINING SA-612 HAVE WPS W/SUFFIX "B"

SHELL / HEADS	.280" SA-455 2:1 S.E. (.214" MIN.)
	.248" SA-612
M.A.W.P.	125 PSIG. @ 200 °F
M.D.M.T.	0 °F @ 125 PSIG.
ASME. SECTION VIII DIV. 1, 2004 ADD 2004	
X-RAY: RT-4 SPOT L.S. & HDS. G.S.	
GALLONS:	1950
WT.	3268 LBS.
SERIAL NO.	
N.B.	



WL-029-B	REV.
	DATE: 5-9-05
FOR:	
VERT. CHILLED WATER TANK	
SURFACE AREA = 213.3 SQ. FT.	
INSIDE: UNPAINTED	
OUTSIDE: PRIME	
LEG-ZONE 4-15 KM.	
BY: J.G./B.C.	SCALE: 1/2" = 12"
ROY E. HANSON JR. MFG.	
1924 COMPTON AVE. LOS ANGELES, CA 90011	