

1"-3000#
SOCKET WELD
W/1" SCH 10 S.S.
PIPE x 26"LG.

1 1/4"-3000#
FULL CPLG.
FOR ANODE

5.2
TYP. 5/32"
5/32"

1"B

1"B

12
TYP.

5.16

3/4"B

2 1/2"

3/4"B

3 1/2"

18 7/8"

31"
O.A.

N.PL.

TIE

2 1/2"

3/4"B

3/4"B

6 1/6"

12 1/6"

7 1/2"

3"

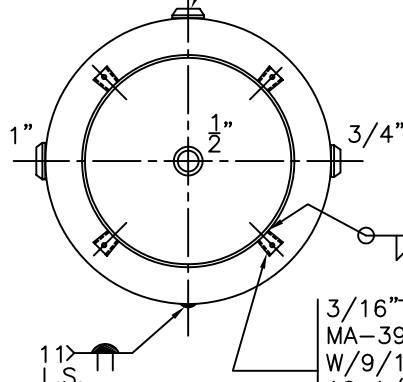
(4) 2"LG. WELDS
@ 90° APART

(4) 4"Ø HOLE
@ 90° APART

1 1/2"B

13 3/8"

(2) 3/4"
IN LINE



3/16"THK. CLIPS PER:
MA-395-B, (4) PLC'S
W/9/16"Ø HOLE ON
16 1/2" B.C.; WELD
OUTSIDE VERT. EDGS
OF CLIPS ONLY

NOTE: 1) HYDRO @ 150 PSIG. MIN.
2) FIRE W/BOTTOM HEAD LOOSE.
3) SHIP LOOSE W/(1) 1 5/16" x 24"LG. RIGID MAG. ANODE.

SHELL / HEADS	
.135" SA-414-G 2:1 S.E.	JOGGLED - .139 OFFSET
.135" SA-414-G	
M.A.W.P. 150 PSIG. @ 210 °F	
ASME. SECTION IV 2004 ADD. 2004	
X-RAY: RT-NO/H.L.W.	
GALLONS: 30	WT. 101 LBS.
SERIAL NO.	
N.B.	
FOR: VERT. HOT WATER TANK	WL-258-B
SURFACE AREA = 13.2 SQ. FT.	REV. DATE: 9-28-05
INSIDE: GLASS LINED	
OUTSIDE: BLAST & PRIME	
BY: J.G./C.J.	SCALE: 1/8"=1"
ROY E. HANSON JR. MFG.	
1924 COMPTON AVE. LOS ANGELES, CA 90011	