

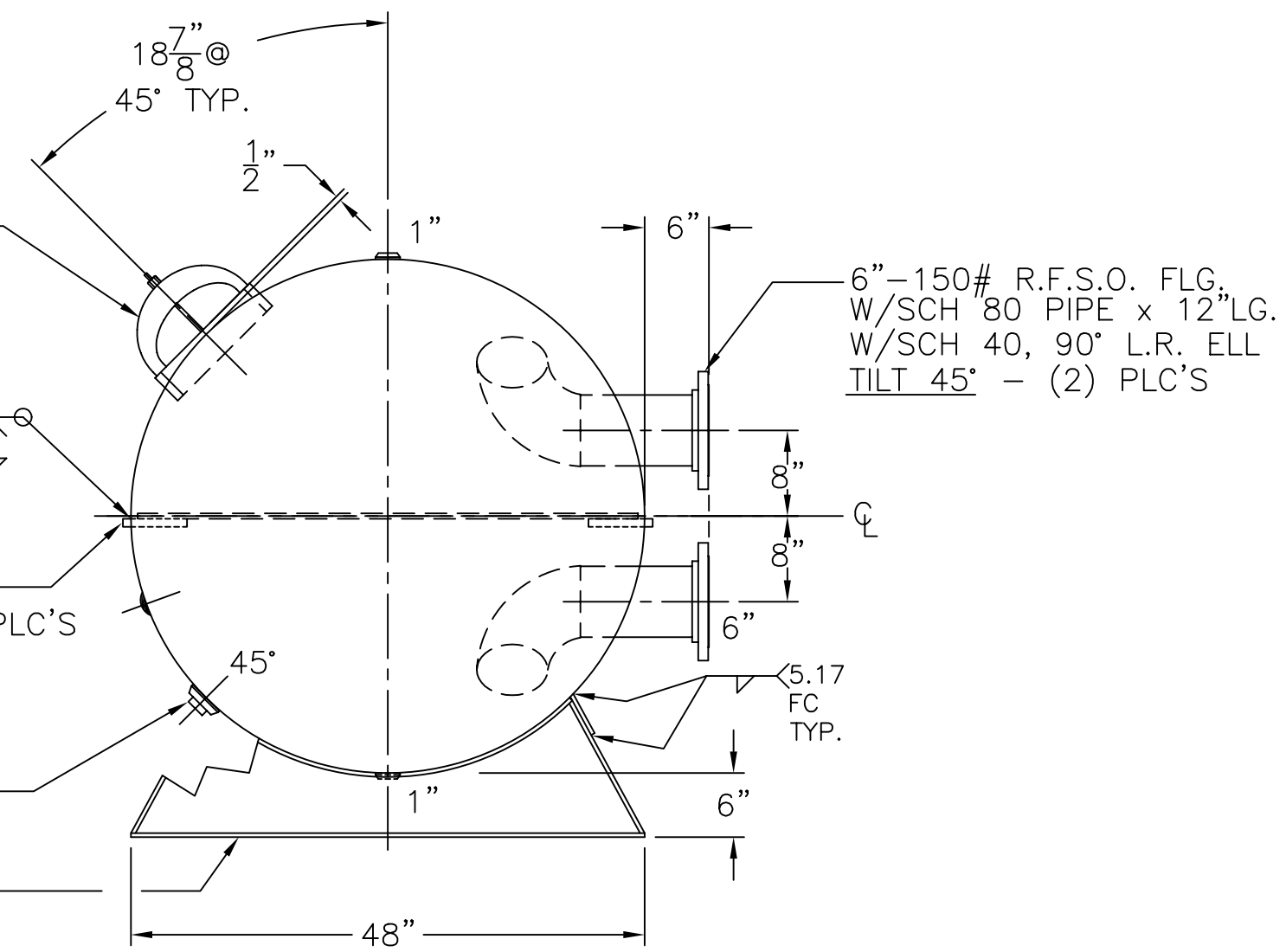
12"x 16" M.WAY
W/1"x 3" LG.
GR. 70 RING

5.20 FC
.200" FULL
3/16" PEN.
TYP.

3/4" diameter ROUND BAR
SA-36 x 6" LG. (4) PLC'S
SEE NOTE: 2

2" B W/C.I. PLUG
INSP. OPENING

STYLE "A" SADDLES
W/WELDED CLIPS
PER: WK-009-B-1A



2) WELD 3/4" diameter ROUND BARS TO SHELL AFTER HEADS ARE IN PLACE.
NOTE: 1) HYDRO @ 165 PSIG.

HEADS / SHELL	.200" SA-455 2:1 S.E.	WL-781-B	REV.	
	JOGGLED		DATE: 1-11-07	
		FOR:	VERT. CHILLED WATER TANK.	
			SURFACE AREA = 71.6 SQ. FT.	
	.200" SA-455	INSIDE: UNPAINTED		
		OUTSIDE: PRIME		
M.A.W.P.	125 PSIG. @ 200 °F	BY: J.G./STEVE SCALE: 3/4"=12"		
M.D.M.T.	0 °F @ 125 PSIG.	ROY E. HANSON JR. MFG.		
ASME. SECTION	VIII DIV. 1, 2004 ADD 2006	1600 E. WASHINGTON BLVD.		
X-RAY:	RT-4 SPOT L.S. ONLY	LOS ANGELES, CA 90021		
GALLONS:	400	WT.	1062 LBS.	
SERIAL NO.				
N.B.				