

.135"-304 S.S. BAFFLE  
PER: WN-188-B-2B

M.WAY  
N.S. & F.S.

RAISED  
N.PL.

5.17  
TYP.

8" N.S.  
& F.S.

L.L.

.317"

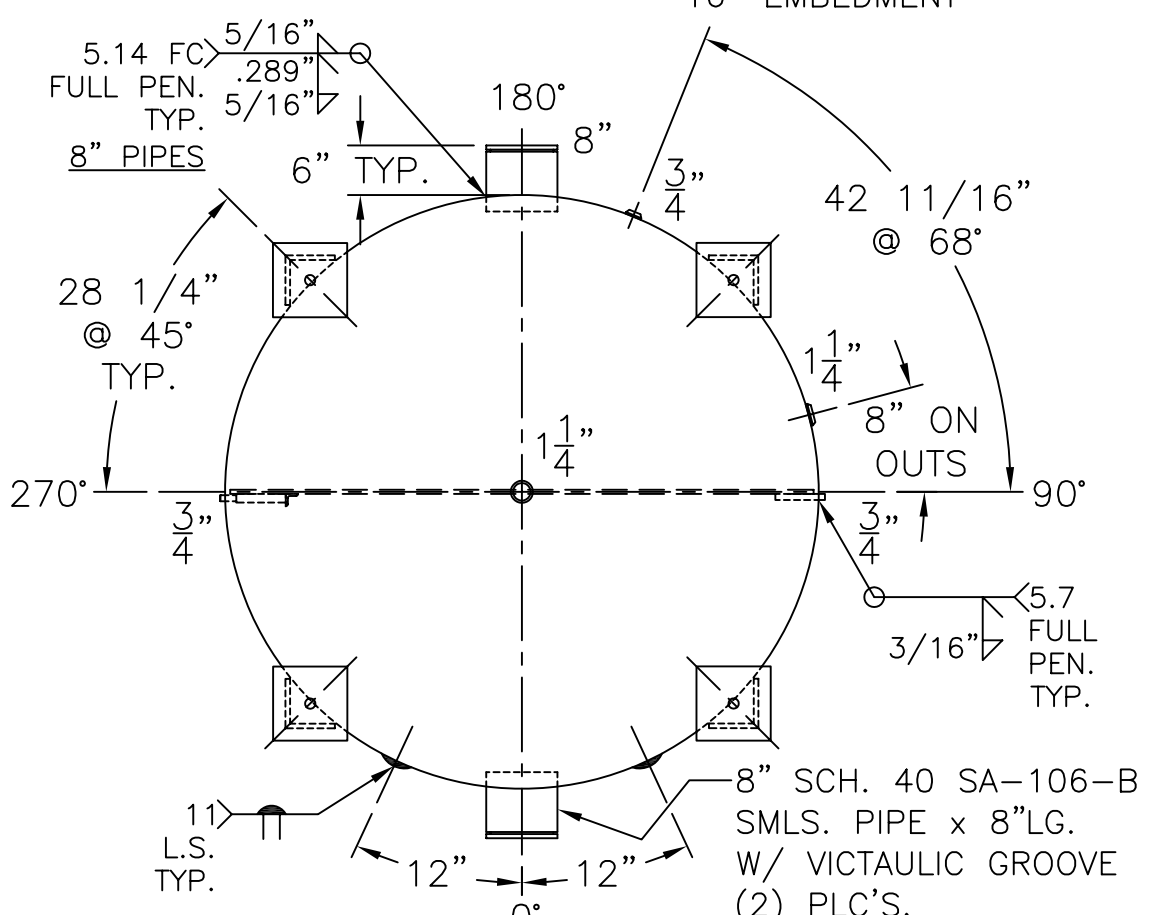
1.1/4" B

(4) 8"x 8"x 3/4" THK.  
x 50 1/2" LG. ANGLE  
LEGS

(4) 10"x 10"x 1" THK.  
PAD W/ 1 1/2" Ø HOLES  
FOR 1 1/4" Ø x 18" LG. BOLTS  
GRADE 5 OR BETTER  
16" EMBEDMENT

NOTE: 1) LOAD @ 90° DOWN.  
2) WELD 3/4" Ø ROUND BARS TO SHELL AFTER HEADS ARE IN PLACE.  
3) HYDRO @ 163 PSIG. MIN.

SHELL / HEADS	
TOP-.289" SA-455	2:1 S.E. (.246" MIN.)
BTM-.317" SA-455	2:1 S.E. (.266" MIN.)
TOP-.289" SA-455	@ 82 9/16"
BTM-.289" SA-455	@ 92 7/16"
M.A.W.P.	125 PSIG. @ 200 °F
M.D.M.T.	0 °F @ 125 PSIG.
ASME SECTION VIII	DIV. 1, 2010 ADD 2010
X-RAY:	RT-4 SPOT L.S. ONLY
GALLONS:	3500 WT. 6280 LBS.
SERIAL NO.	
N.B.	



8" SCH. 40 SA-106-B  
SMLS. PIPE x 8" LG.  
W/ VICTAULIC GROOVE  
(2) PLC'S.

**WN-188-B**  
REV. 3-7-11  
DATE: 3-7-11  
FOR: -  
VERT. CHILLED WATER TANK  
SURFACE AREA = 358.3 SQ. FT.  
INSIDE: CARBON STEEL IS  
EPOXY LINED  
OUTSIDE: S. BLAST & INORGANIC  
ZINC PRIME  
LEG-ZONE 4-15 KM.  
BY: E.S. / STEVE SCALE: 1/2" = 12"  
**ROY E. HANSON JR. MFG.**  
1600 E. WASHINGTON BLVD.  
LOS ANGELES, CA 90021