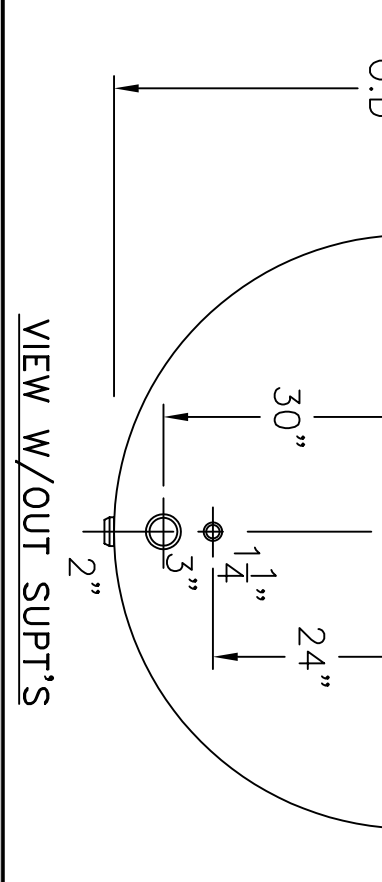


NOTE. 1) HYDRO @ 188 PSIG. MIN. TO 197 PSIG. MAX.  
 2) SHIP LOOSE W/(3) 1 5/16" x 72" LG. FLEX. MAG. ANODES.  
 3) SHELL & LEFT HEAD - 8/26/04 PROOF TEST.

SHELL / HEADS	LEFT - .250" SA-455 2:1 S.E. (.210" MIN.)	REV. 11-17-08
	RIGHT - .3125" SA-455 2:1 S.E. (.263" MIN.)	DATE: 5-21-90
	.250" SA-455 (.248" MIN.)	
M.A.W.P.	125 PSIG. @ 210 °F	
ASME SECTION IV	2007 ADD 2007	
X-RAY:	RT-NO/H.L.W.	
GALLONS:	2150 WT. 3136 LBS.	
SERIAL NO.		
N.B.		
FOR:	HANSON TANK	
	HORIZ. HOT WATER TANK.	
	SURFACE AREA = 232.0 SQ.FT.	
INSIDE:	GLASS LINED	
OUTSIDE:	PRIME	
CAD "B" SIZE UNDER "STD"-SERIES		
BY: J.G.	SCALE: 1/2"=12"	
<b>ROY E. HANSON JR. MFG.</b>		
	1600 E. WASHINGTON BLVD.	
	LOS ANGELES, CA 90021	



VIEW W/OUT SUPPT'S