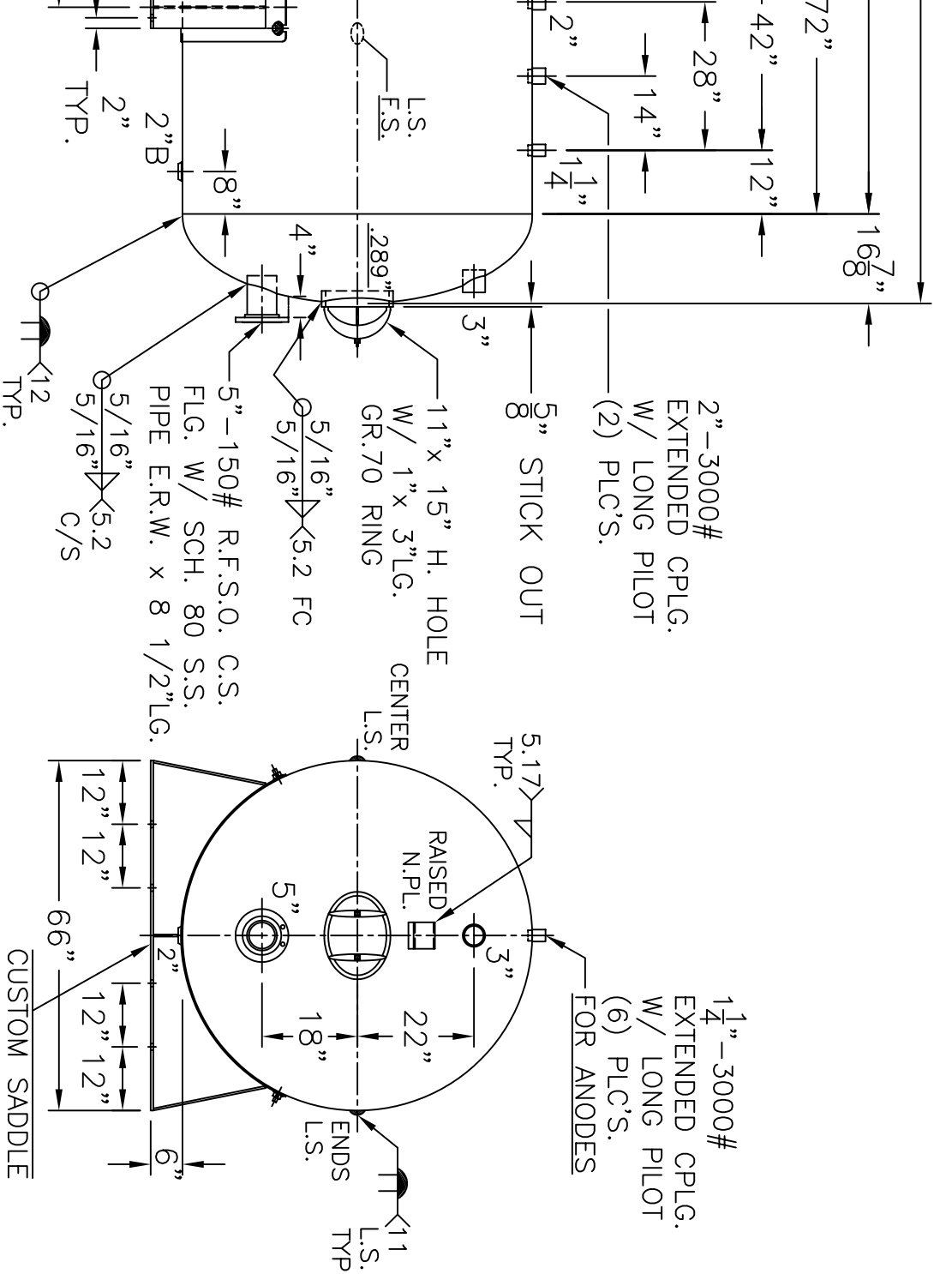


VIEW W/O SUPPORTS



NOTE: 1) SHIP LOOSE W/ (6) 1 5/16" x 60" LG. FLEX. MAG. ANODES.
 2) HYDRO @ 188 PSIG. MIN. TO 197 PSIG. MAX.
 3) ALL PIPES SA-312-304 E.R.W.

HEADS / SHELL	LEFT - .250" SA-455 2:1 S.E. (.219" MIN.)	RIGHT - .289" SA-455 2:1 S.E. (.246" MIN.)	ENDS - .289" SA-455 @ 72"	CENTER - .250" SA-455 @ 94"
M.A.W.P.	125 PSIG. @ 210 °F			
ASME SECTION IV 2007 ADD 2007				
X-RAY: RT-NO / H.L.W.				
GALLONS: 3800		WT. 6270 LBS.		
SERIAL NO.				
N.B.				

WM-530-B

FOR: -	REV. 12-9-08
HORIZ. HOT WATER TANK	DATE: 11-26-08
SURFACE AREA = 410.0 SQ. FT.	
INSIDE: GLASS LINED	
OUTSIDE: PRIME	
BY: E.S. / C.J. SCALE: 3/8"=12"	
ROY E. HANSON JR. MFG.	
1600 E. WASHINGTON BLVD.	
LOS ANGELES, CA 90021	