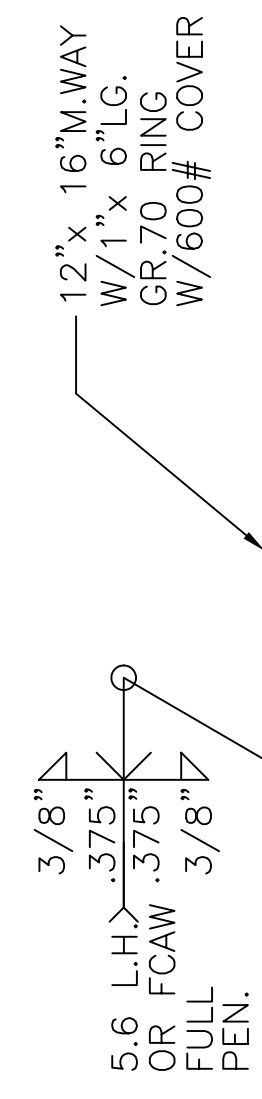


(3) 3" x 3" x 3/8" THK.
x 23 7/8" LG. ANGLE LEGS
(3) 4" x 4" x 3/8" THK.
PADS W/ 3/4" Ø HOLES



NOTE: 1) HYDRO @ 715 PSIG. MIN.
2) PRE HEAT ALL WELDS TO 150°F.

SHELL / HEADS	.625" SA-516-70 2:1 S.E. (.564" MIN.)
	.750" SA-516-70
M.A.W.P.	550 PSIG. @ 400 °F
M.D.M.T.	-20 °F @ 550 PSIG.
ASME. SECTION VIII DIV. 1, 2001 ADD. 2002	
X-RAY:	RT-4 SPOT L.S. & G.S.
GALLONS:	660
WT.	3715 LBS.
SERIAL NO.	
N.B.	

42-VK-660-L	REV. 12-02-02
	DATE: 6-5-87
FOR: HANSON STANDARD VERT. AIR TANK	
INSIDE: UNPAINTED	
OUTSIDE: PRIME	L-4-02
CAD-"B" UNDER "STD"-SERIES	
BY: E.S.	SCALE: 3/4"=12"
ROY E. HANSON JR. MFG.	
1924 COMPTON AVE. LOS ANGELES, CA 90011	