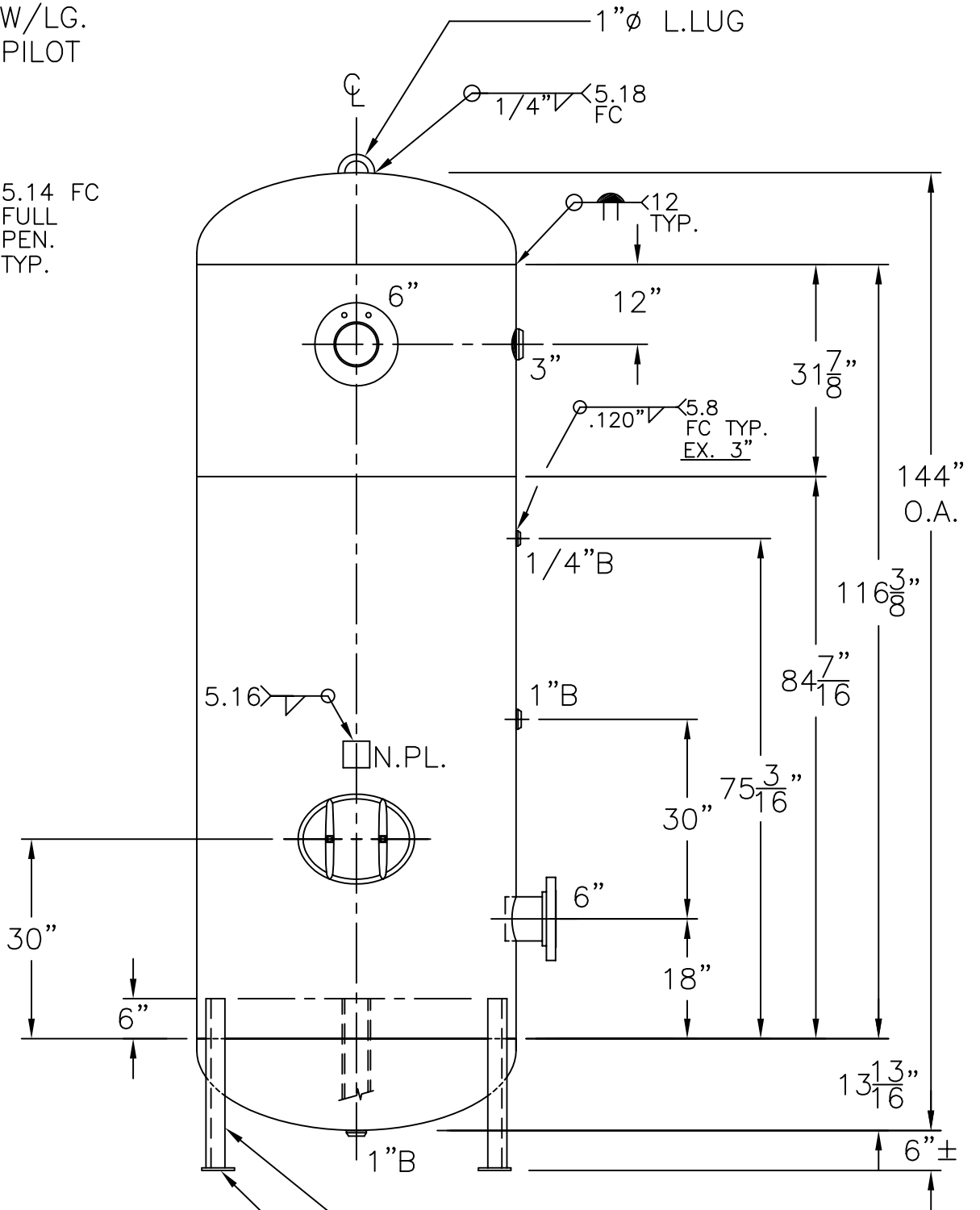


6"-300# R.F.S.O.
 FLG. W/SCH 80
 PIPE x 7 5/8"LG.
 (2) PLC'S

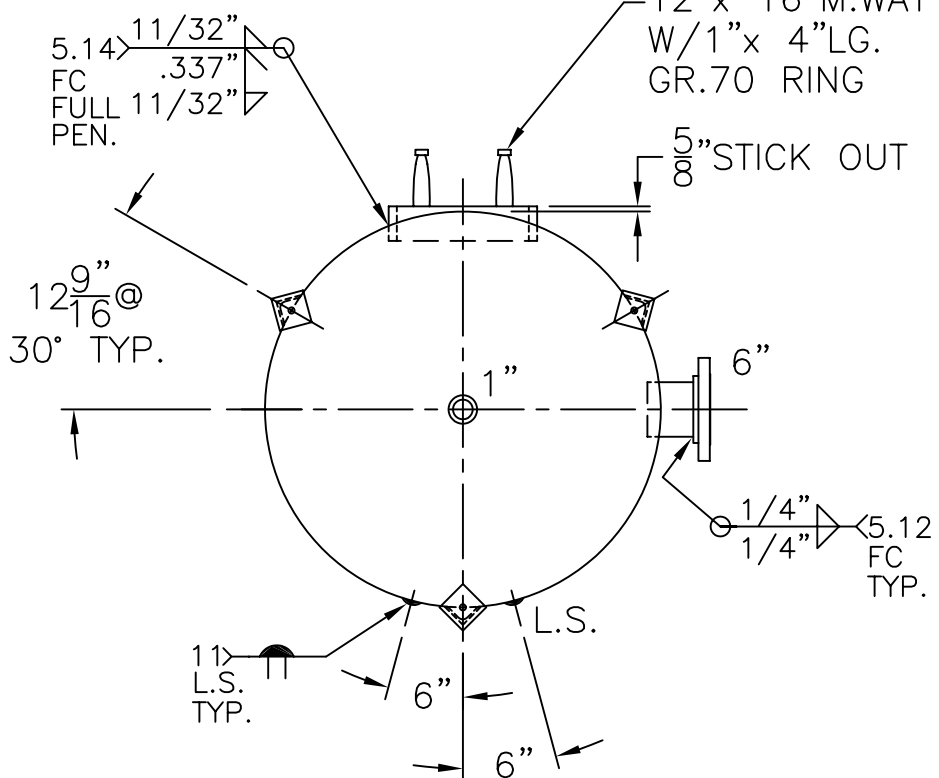


(3) 3" x 3" x 1/4" THK.
 x 25 7/16" LG. ANGLE LEGS

(3) 4" x 4" x 3/8" THK.
 PAD W/3/4" Ø HOLE
 FOR 1/2" Ø x 8" LG. BOLTS
 GRADE 5 OR BETTER
 - 6" EMBEDMENT

12" x 16" M.WAY
 W/1" x 4" LG.
 GR.70 RING

5/8" STICK OUT



NOTE: 1) HYDRO @ 328 PSIG. MIN.

SHELL / HEADS	
.289" SA-455 2:1 S.E. (.280" MIN.) JOGGLE	
.298 OFFSET	
.337" SA-455	
M.A.W.P. 250 PSIG. @ 400 °F	
M.D.M.T. -20 °F @ 250 PSIG.	
ASME SECTION VIII DIV. 1, 2004 ADD 2006	
X-RAY: RT-4 SPOT L.S. & HDS. G.S.	
GALLONS: 1060	WT. 2441 LBS.
SERIAL NO.	
N.B.	
48-VC-1060-L	REV. 10-11-07
FOR: HANSON STANDARD	DATE: 6-24-99
VERT. AIR TANK	
INSIDE: UNPAINTED	
OUTSIDE: PRIME	
CAD "B" SIZE UNDER "STD"-SERIES	
LEG ZONE: 4-15 KM.	
BY: J.G.	SCALE: 1/2" = 12"
ROY E. HANSON JR. MFG.	
1600 E. WASHINGTON BLVD.	
LOS ANGELES, CA 90021	