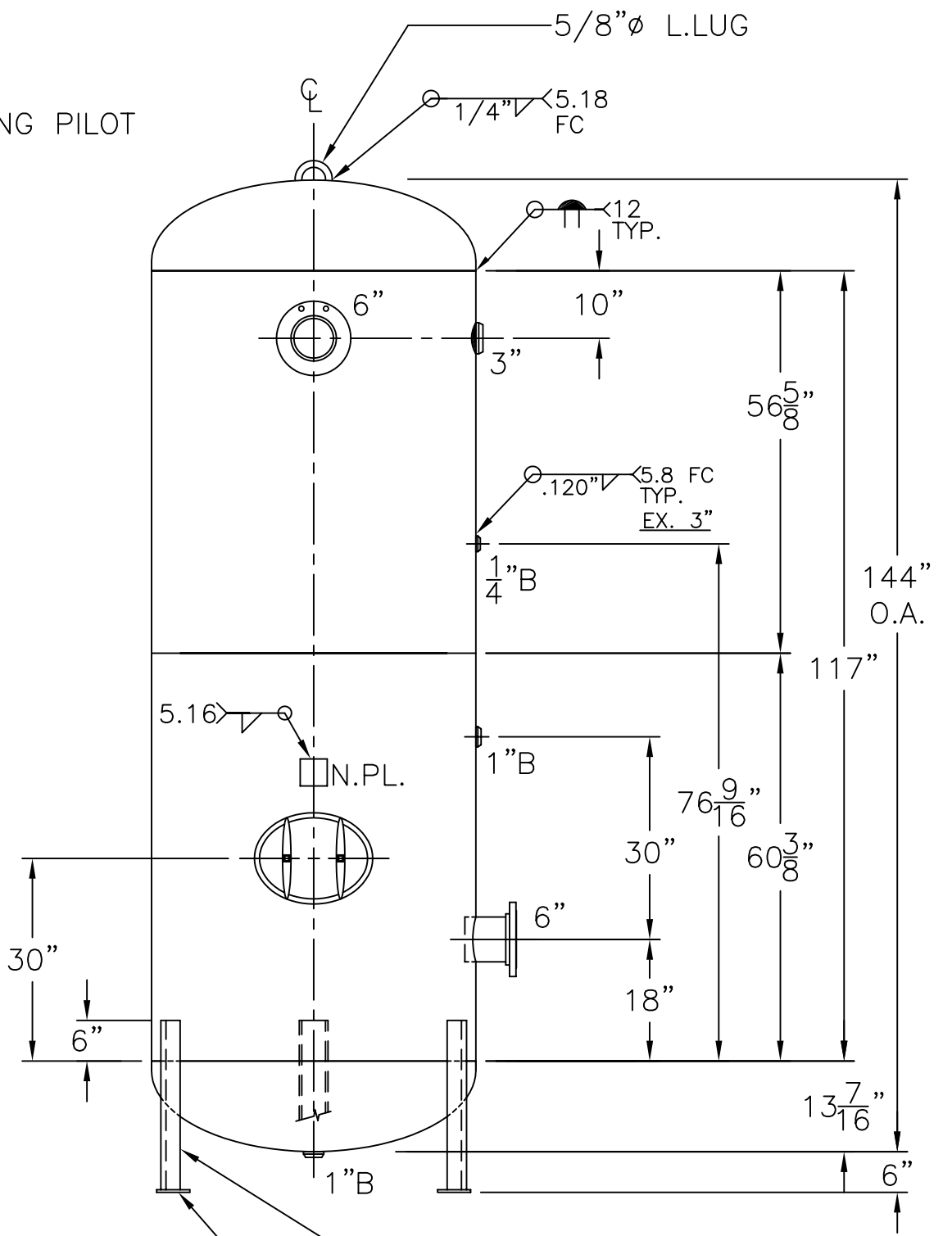
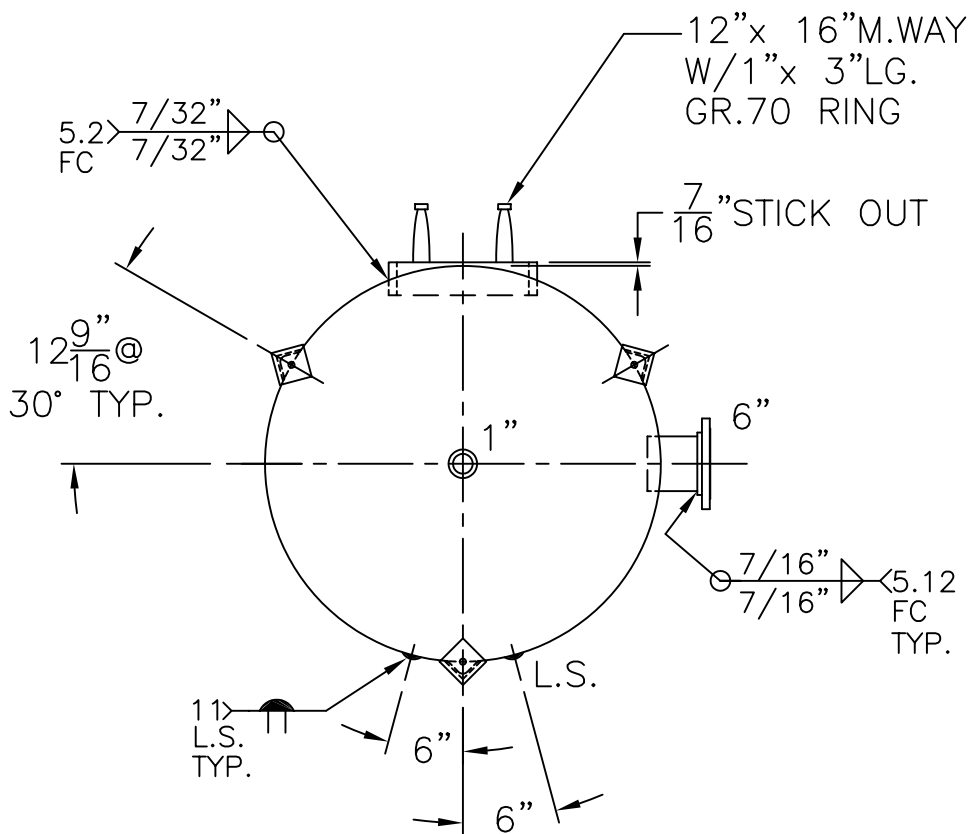


6" - 150# R.F.S.O.
 FLG. W/SCH 80
 SA-106-B
 PIPE x 7 5/8" LG.
 (2) PLC'S



(3) 3" x 3" x 1/4" THK.
 x 25 1/16" LG. ANGLE LEGS

(3) 4" x 4" x 3/8" THK.
 PAD W/ 7/8" Ø HOLE
 FOR 5/8" Ø x 8" LG. BOLTS
 GRADE 5 OR BETTER
 6" EMBEDMENT



NOTE: 1) HYDRO @ 179 PSIG. MIN.

SHELL / HEADS	
.250" SA-414-G	2:1 S.E.
JOGGLE - .198	OFFSET
.200" SA-455	
M.A.W.P.	137 PSIG. @ 400 °F
M.D.M.T.	-20 °F @ 137 PSIG.
ASME. SECTION VIII	DIV. 1, 2007 ADD 2009
X-RAY:	RT-4 SPOT L.S. ONLY
GALLONS:	1060 WT. 1715 LBS.
SERIAL NO.	
N.B.	
48-VQ-1060-L	
FOR: HANSON STANDARD	REV. 6-21-10
VERT. AIR TANK	DATE: 6-3-80
UW-21 (b)	
INSIDE: UNPAINTED	
OUTSIDE: PRIME	
CAD "B" SIZE UNDER "STD"-SERIES	
BY: J.G.	SCALE: 1/2" = 12"
ROY E. HANSON JR. MFG.	
1600 E. WASHINGTON BLVD.	
LOS ANGELES, CA 90021	