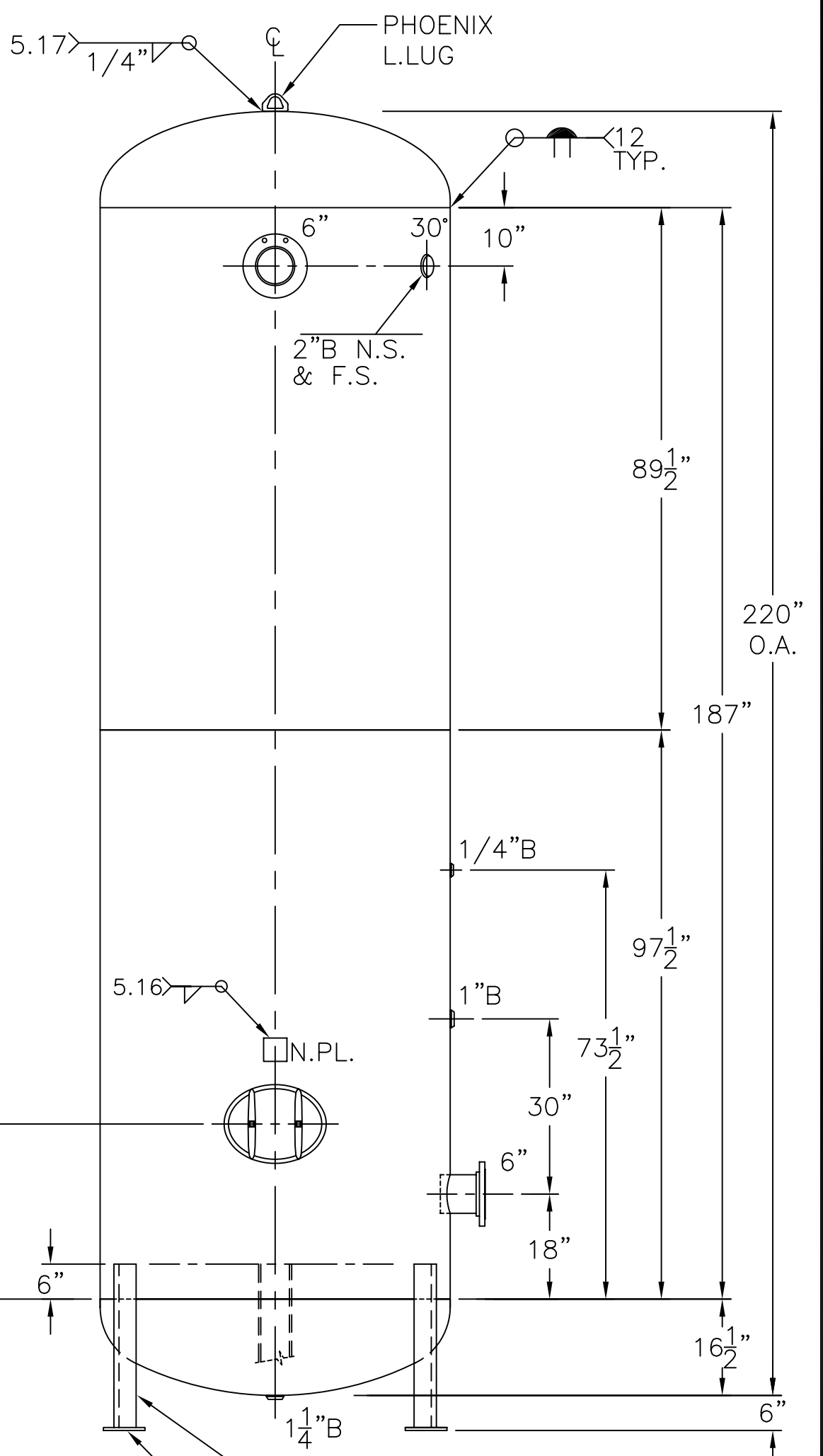


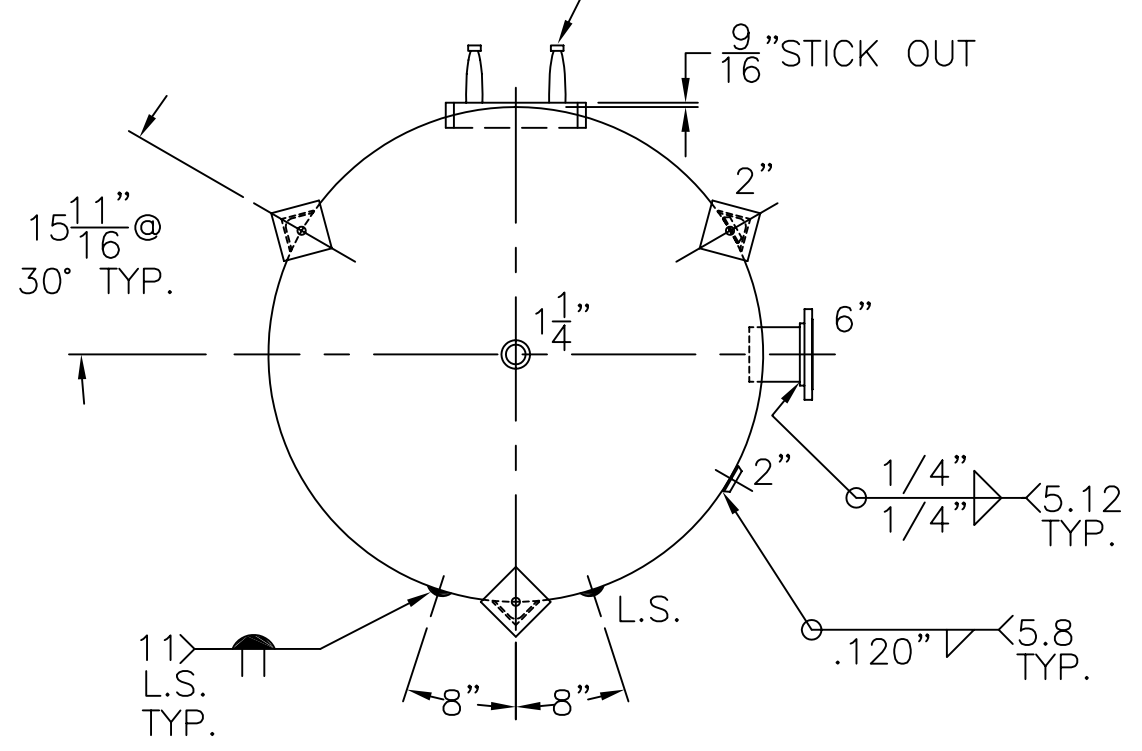
6"-150# R.F.S.O.
 FLG. W/SCH 80
 PIPE x 7 5/8"LG.
 (2) PLC'S



(3) 4" x 4" x 3/8" THK.
 x 28" LG. ANGLE LEGS
 (3) 6" x 6" x 1/2" THK.
 PADS W/1" Ø HOLE

12" x 16" M.WAY
 W/1" x 3" LG.
 GR.70 RING

9/16" STICK OUT



NOTE: 1) HYDRO @ 179 PSIG. MIN.

SHELL / HEADS		.248" SA-455 2:1 S.E. (.225" MIN.)	
.250" SA-455			
M.A.W.P.	137 PSIG. @ 400 °F		
M.D.M.T.	-20 °F @ 137 PSIG.		
ASME. SECTION VIII	DIV. 1, 2001 ADD 2002		
X-RAY: RT-4 SPOT L.S.			
GALLONS: 2520	WT. 3445 LBS.		
SERIAL NO.			
N.B.			
INSIDE: UNPAINTED		60-VQ-2520-L	
OUTSIDE: PRIME		REV. 12-6-02	
CAD "B" SIZE UNDER "STD"-SERIES		DATE: 3-2-99	
BY: J.G.		FOR: HANSON STANDARD	
SCALE: 1/2" = 12"		VERT. AIR TANK	
ROY E. HANSON JR. MFG.		INSIDE: UNPAINTED	
1924 COMPTON AVE.			
LOS ANGELES, CA 90011			