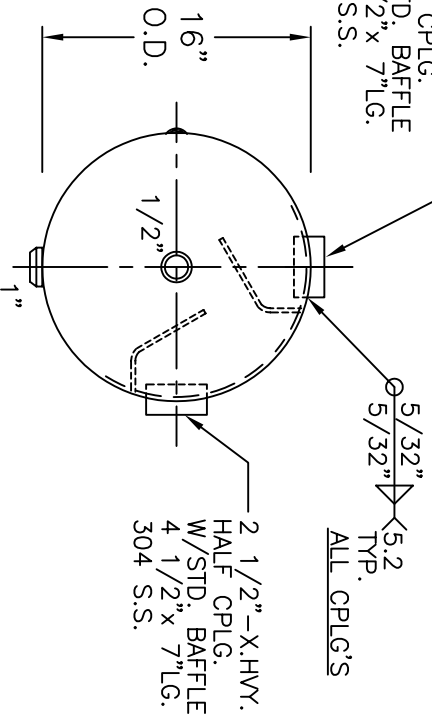


2 1/2"-X.HVY.  
HALF CPLG.  
W/STD. BAFFLE  
4 1/2" x 7" LG.  
304 S.S.



5/32"  
5.2  
TYP.  
ALL CPLG'S

2 1/2"-X.HVY.  
HALF CPLG.  
W/STD. BAFFLE  
4 1/2" x 7" LG.  
304 S.S.

NOTE: 1) HYDRO @ 195 PSIG. MIN.

HEADS	
.149" SA-414-G	2:1 S.E.
JOGGLE - .129	OFFSET
SHELL	
.136" SA-414-G	
M.A.W.P.	150 PSIG. @ 250 °F
M.D.M.T.	-20 °F @ 150 PSIG.
ASME. SECTION VIII	DIV. 1, 2013
X-RAY:	RT-NO
GALLONS:	40 WT. 120 LBS.
SERIAL NO.	
NB	

<b>WK-410-A</b>	REV. 12-24-13
FOR: HANSON STANDARD	DATE: 11-21-03
BUFFER TANK	
INSIDE: UNPAINTED	
OUTSIDE: PRIME	
BY: J.G.	SCALE: 1"=12"
<b>ROY E. HANSON JR. MFG.</b>	
1600 E. WASHINGTON BLVD.	
LOS ANGELES, CA 90021	