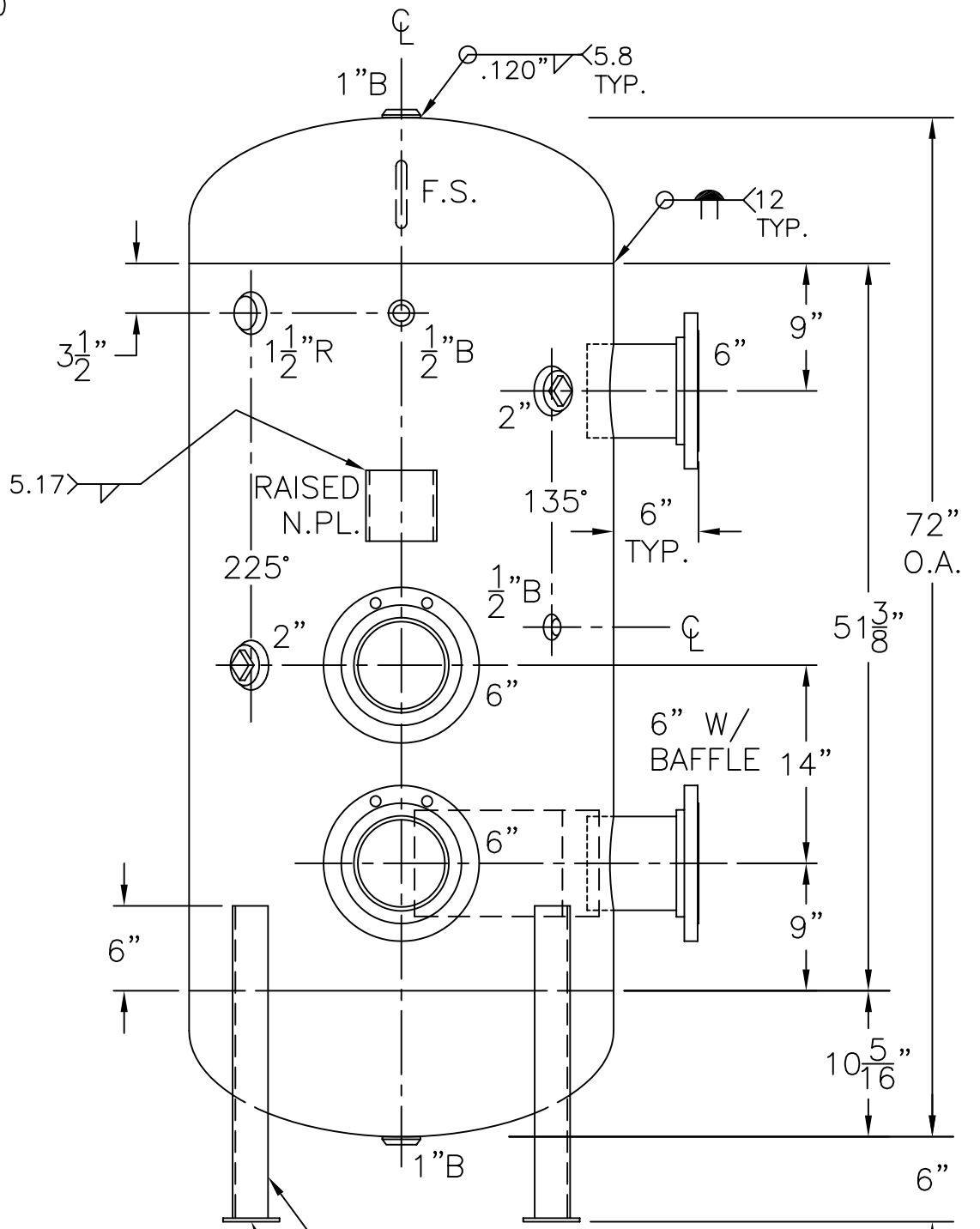
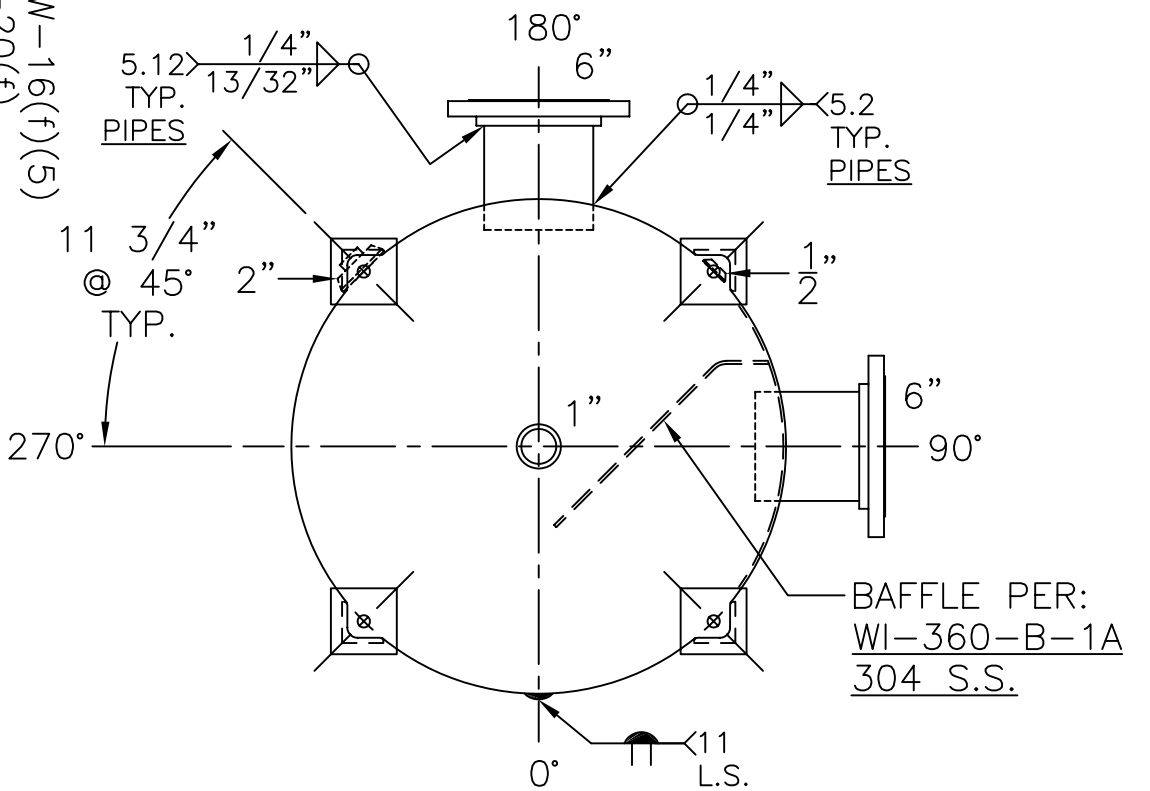


6"-150# R.F.S.O.  
FLG. W/ SCH. 40  
SA-106-B  
PIPE x 7 5/8"LG.  
(4) PLC'S.



(4) 2 1/2"x 2 1/2"x 1/4"THK.  
x 22 1/16"LG. ANGLE LEGS

(4) 4"x 4"x 1/4"THK.  
PAD W/ 7/8"Ø HOLE  
FOR 5/8"Ø x 8"LG. BOLTS  
GRADE 5 OR BETTER  
6" EMBEDMENT



NOTE: 1) HYDRO @ 163 PSIG. MIN.  
2) CRN B.C.: K8476.1  
3) IMPACT TESTED? NO UG-20(f)  
4) NPT 2" AND SMALLER UW-16(f)(5)

SHELL / HEADS	.200" SA-455 2:1 S.E.
JOGGLE -	.218" OFFSET
	.200" SA-455
	.0625" C.A. ON INTERNALS
M.A.W.P.	125 PSIG. @ 200 °F
M.D.M.T.	0 °F @ 125 PSIG.
ASME SECTION VIII	DIV. 1, 2010 ADD 2010
X-RAY:	RT-NO
GALLONS:	200
WT.	601 LBS.
SERIAL NO.	
N.B.	

**WN-300-B**

REV. 1 7-25-11  
DATE: 7-20-11

REV. 2 9-26-11

FOR: -

VERT. HOT WATER (BUFFER) TANK

SURFACE AREA = 50.9 SQ. FT.

UW-21(b)

INSIDE: UNPAINTED

OUTSIDE: PRIME

LEG-ZONE 4-15 KM.

BY: E.S. / C.J. SCALE: 1" = 12"

**ROY E. HANSON JR. MFG.**

1600 E. WASHINGTON BLVD.  
LOS ANGELES, CA 90021