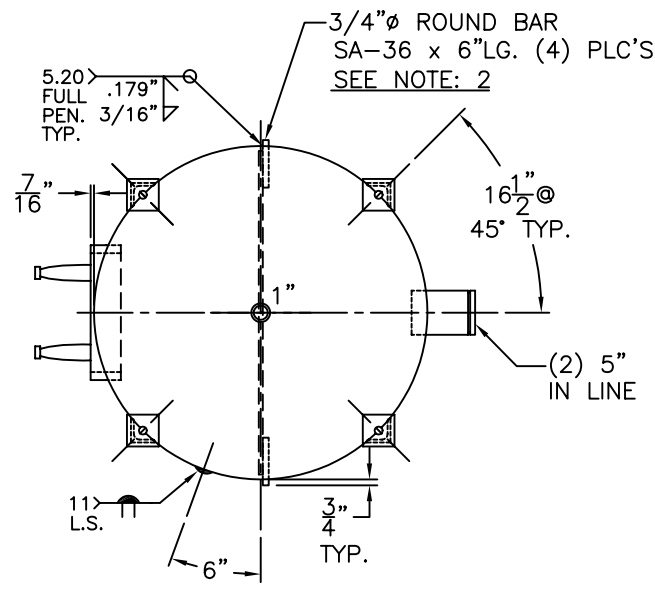


(4) 3" x 3" x 1/4" THK. x 21 5/8" LG. ANGLE LEGS

(4) 4" x 4" x 3/8" THK. PAD W/3/4" ϕ HOLE



NOTE: 1) WELD 3/4" ϕ ROUND BARS TO SHELL AFTER HEADS ARE IN PLACE.

2) HYDRO @ 165 PSIG.

SHELL / HEADS	
JOGGLED	.205" SA-455 2:1 S.E.
	.179" SA-455
M.A.W.P.	125 PSIG. @ 200 °F
M.D.M.T.	-20 °F @ 125 PSIG.
ASME SECTION	VIII DIV. 1, 2004 ADD 2005
X-RAY:	RT-NO
GALLONS:	500
SERIAL NO.	WT. 1054 LBS.
N.B.	
WL-455-B	
FOR:	REV.
VERT. CHILLED WATER TANK.	DATE: 3-28-06
INSIDE: UNPAINTED	
OUTSIDE: PRIME	
LEG ZONE: 4-10 KM.	
BY: J.G./C.J.	SCALE: 3/4" = 12"
ROY E. HANSON JR. MFG.	
1924 COMPTON AVE.	
LOS ANGELES, CA 90011	