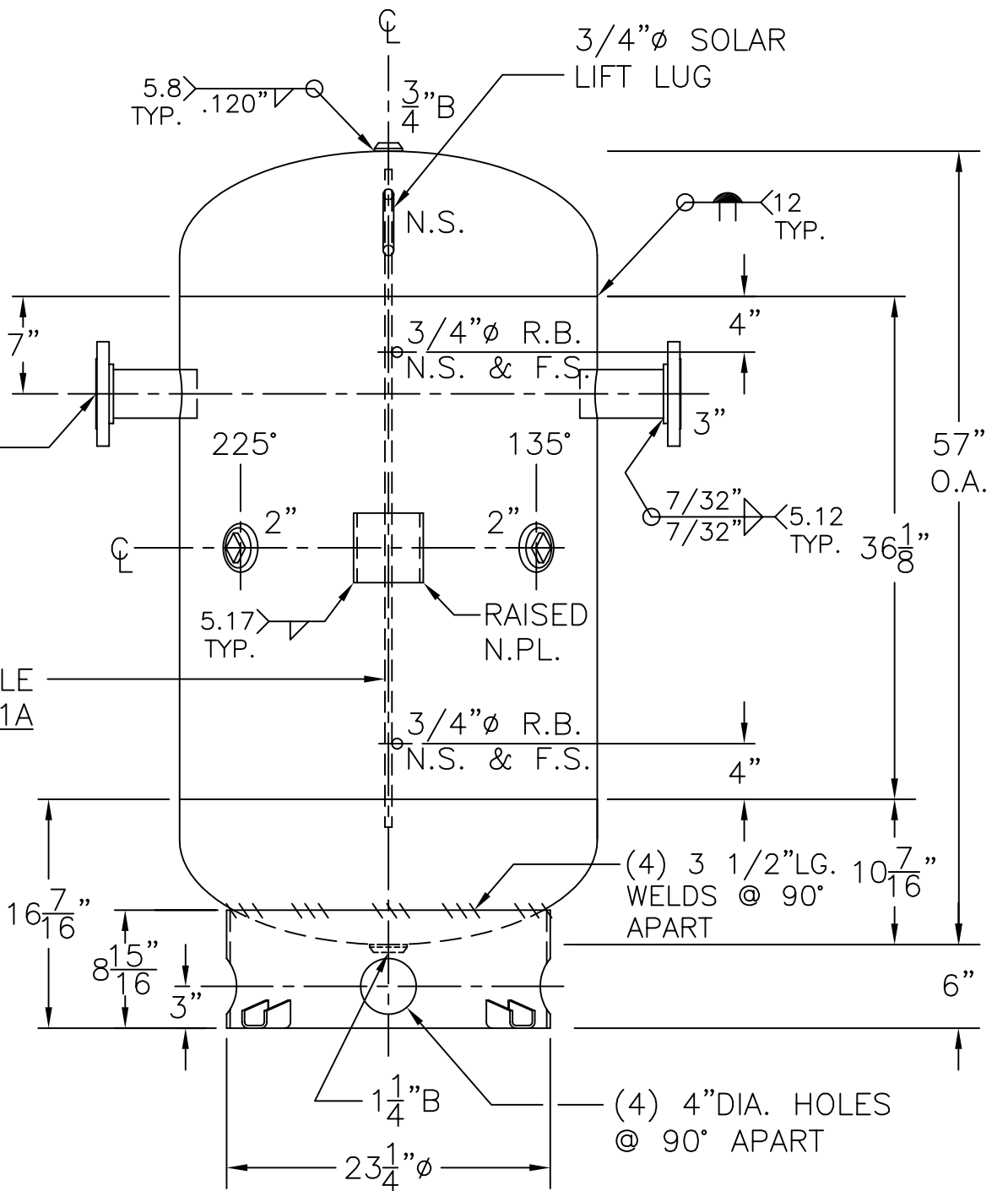
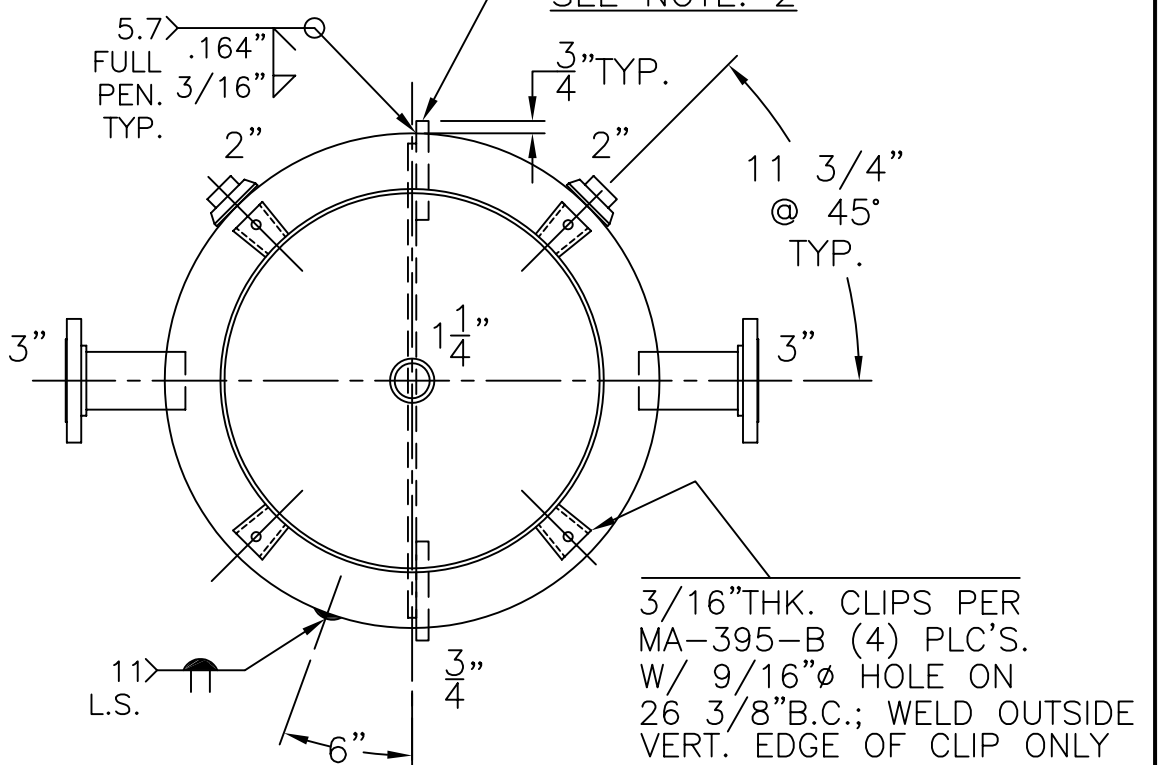


3"-150# R.F.S.O. FLG. W/ SCH. 40 PIPE x 7" LG. (2) PLC'S.

.135" THK. BAFFLE PER: WM-297-B-1A



3/4" ϕ ROUND BAR SA-36 x 6" LG. (4) PLC'S. SEE NOTE: 2



NOTE: 1) WELD 3/4" ϕ ROUND BARS TO SHELL AFTER HEADS ARE IN PLACE. 2) HYDRO @ 203 PSIG. MIN.

SHELL / HEADS		M.A.W.P. 155 PSIG. @ 180 °F		M.D.M.T. 0 °F @ 155 PSIG.		ASME. SECTION VIII DIV. 1, 2007 ADD 2007		X-RAY: RT-NO		GALLONS: 155		WT. 423 LBS.		SERIAL NO.		N.B.	
.166" SA-414-G 2:1 S.E.		.164" SA-414-G															
JOGGLE - .149" OFFSET		FOR: -		VERT. CHILLED WATER TANK		SURFACE AREA = 41.0 SQ. FT.		INSIDE: UNPAINTED		OUTSIDE: SAND BLAST, INORGANIC ZINC PRIME		BY: E.S.		SCALE: 1"=12"		REV. 7-21-08	
WM-297-B		DATE: 5-6-08															
ROY E. HANSON JR. MFG.		1600 E. WASHINGTON BLVD.		LOS ANGELES, CA 90021													