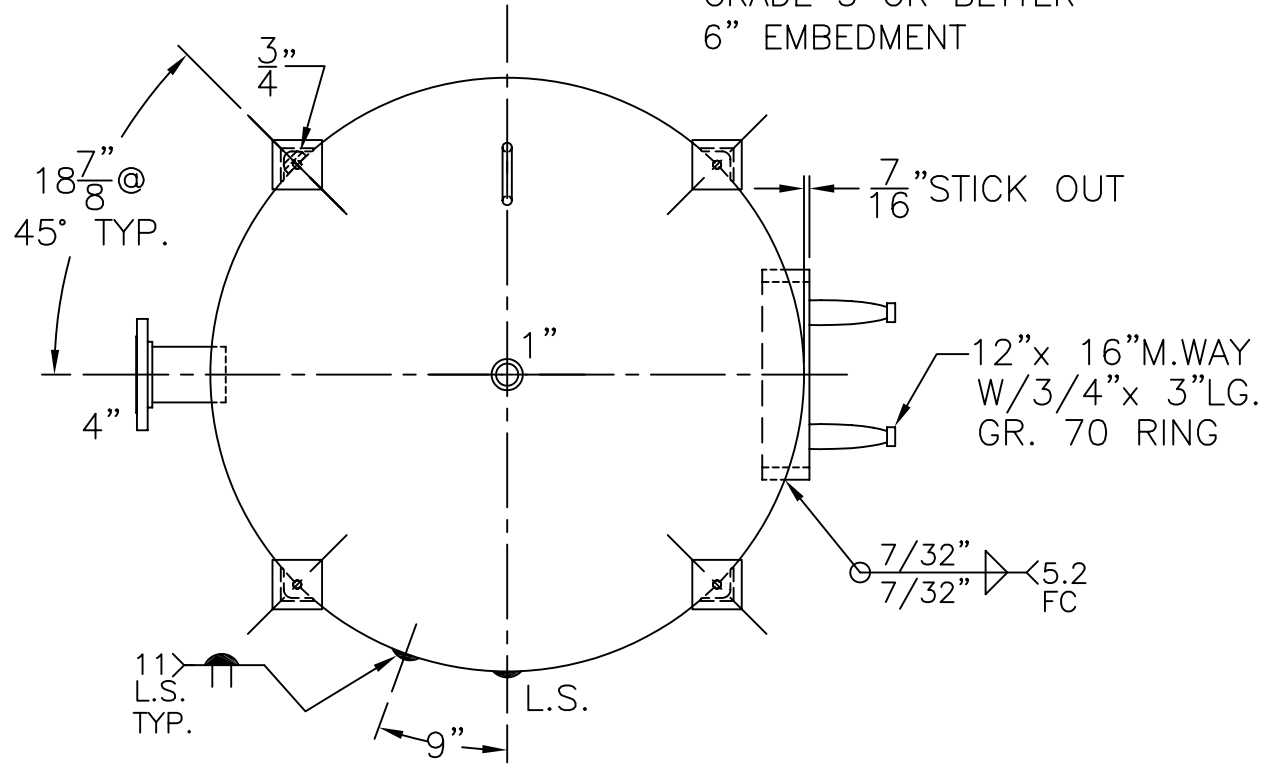


NOTE: 1) HYDRO @ 163 PSIG. MIN.

SHELL / HEADS	
.245" SA-414-G 2:1 S.E.	JOGGLED - .198 OFFSET
M.A.W.P. 125 PSIG. @ 180 °F	M.D.M.T. 0 °F @ 125 PSIG.
ASME SECTION VIII DIV. 1, 2007 ADD 2009	
X-RAY: RT-4 SPOT L.S. ONLY	GALLONS: 1000 WT. 1618 LBS.
SERIAL NO.	N.B.

WM-929-B	REV. -
FOR: -	DATE: 4-8-10
VERT. CHILLED WATER TANK.	
SURFACE AREA = 151.7 SQ. FT.	
UW-21 (b)	
INSIDE: EPOXY LINED	
OUTSIDE: PRIME	
LEG ZONE: 3-15 KM.	
BY: J.G./R.L.	SCALE: 3/4"=12"
ROY E. HANSON JR. MFG.	
1600 E. WASHINGTON BLVD.	
LOS ANGELES, CA 90021	



(4) 3"x 3"x 3/8"THK. x 22 15/16"LG. ANGLE LEGS

(4) 4"x 4"x 1/2"THK. PAD W/ 7/8"Ø HOLE FOR 5/8"Ø x 8"LG. BOLTS GRADE 5 OR BETTER 6" EMBEDMENT