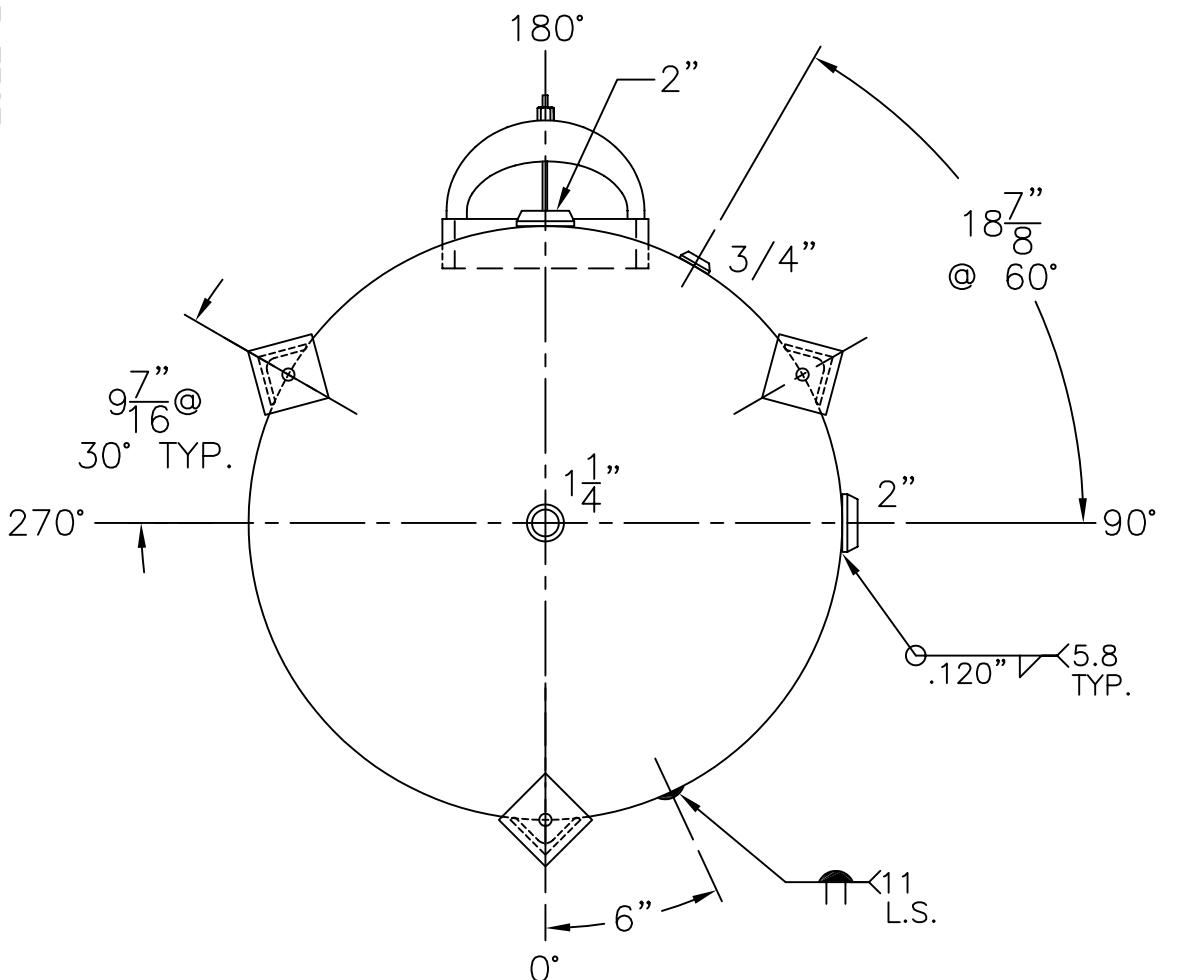


(3) 3" x 3" x 1/4" THK. x 20 7/8" LG. ANGLE LEGS

(3) 4" x 4" x 5/16" THK. PAD W/ 3/4"  $\phi$  HOLE



NOTE: 1) 2) 4-1-04 PROOF TEST. HYDRO @ 240 PSIG.

SHELL / HEADS	.182" SA-414-G 2:1 S.E.
JOGGLE -	.159 OFFSET
M.A.W.P.	160 PSIG. @ 180 °F
ASME. SECTION	IV 2010 ADD 2011
X-RAY:	RT-NO / H.L.W.
GALLONS:	305 WT. 541 LBS.
SERIAL NO.	
N.B.	

ES-36-305-V	REV. 5-16-12
FOR: HANSON STANDARD	DATE: 8-31-89
VERT. HOT WATER TANK	
SURFACE AREA = 65.2 SQ. FT.	
INSIDE: EPOXY LINED	
OUTSIDE: PRIME	
CAD-"B" UNDER "STD"-SERIES	
LEG-ZONE 4-15 KM. DATE: 2-4-03	
BY: J.G.	SCALE: 1"=12"
<b>ROY E. HANSON JR. MFG.</b>	
1600 E. WASHINGTON BLVD.	
LOS ANGELES, CA 90021	