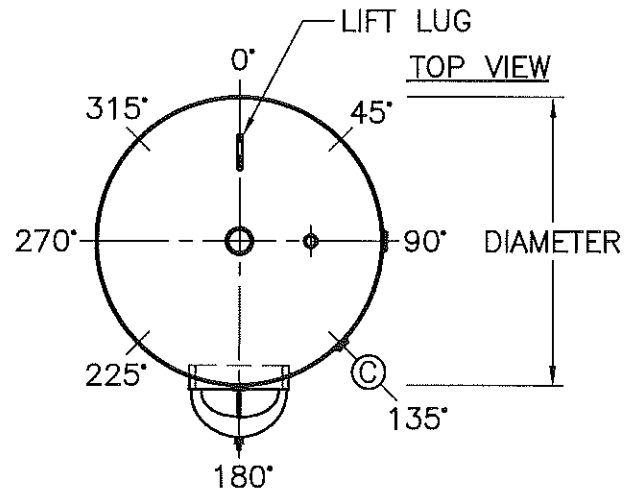


Custom Storage Tank, A.S.M.E. Code

| VESSEL CONNECTION SCHEDULE | | | | STANDARD ORIENTATION |
|----------------------------|-------------|------|-----------------------|----------------------|
| MK | SIZE | TYPE | SERVICE | |
| A | CODE | OVAL | ENTRY HANDHOLE | 180° |
| B | 3/4" | FPT | THERMOMETER | 180° |
| C | 3/4" | FPT | AQUASTAT SENSOR | 135° |
| D | 1 1/4" | FPT | TANK DRAIN | BOTTOM |
| E | | FPT | P & T RELIEF VALVE | TOP-90° |
| F | | | BOILER RETURN | 90° |
| G | | | BOILER SUPPLY | 180° |
| H | | | HOT WATER SUPPLY | TOP |
| J | 1 1/4" | FPT | RECIRC. FROM BUILDING | 90° |
| K | 4 1/2" x 7" | S.S. | BAFFLE | at F |



| |
|--------------|
| Customer |
| Contact Name |
| P.O. # |
| Phone Number |
| Fax Number |
| E-mail: |
| Job |

| |
|-------------------------|
| Tank size: |
| Gallons |
| Diameter |
| Length |
| Working Pressure |
| (125 psig. is Standard) |

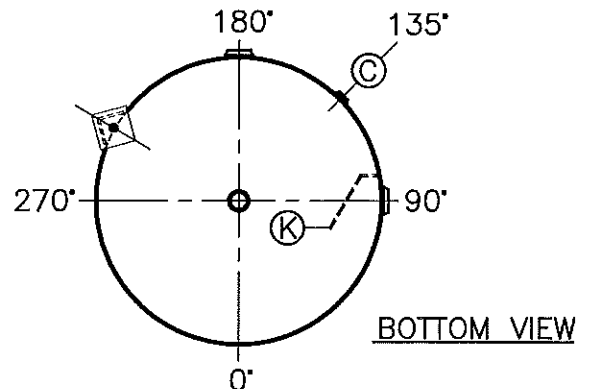
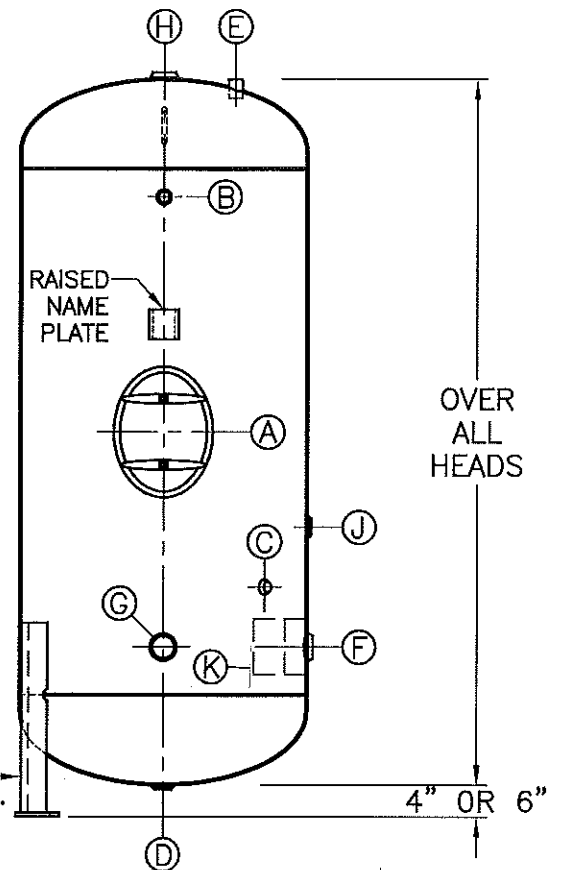
| |
|-----------------------------|
| Lining: |
| Glass with anode(s) (+210°) |
| Epoxy (+180°) |
| Cement (+210°) |

| Insulation: | Increases |
|----------------------------------|--------------|
| Foam/Hardshell (R-16) | 4.5" on Dia. |
| Fiberglass/Metal Jacket (R-8) | 4" on Dia. |
| Fiberglass/Metal Jacket (R-12.5) | 6" on Dia. |

| |
|-----------------------|
| Special Instructions: |
| |
| |
| |

Roy E. Hanson Jr. Mfg. (800) 421-9395
www.hansontank.us

WP-172-A | DATE: 2-8-17 | REV:



BOTTOM VIEW