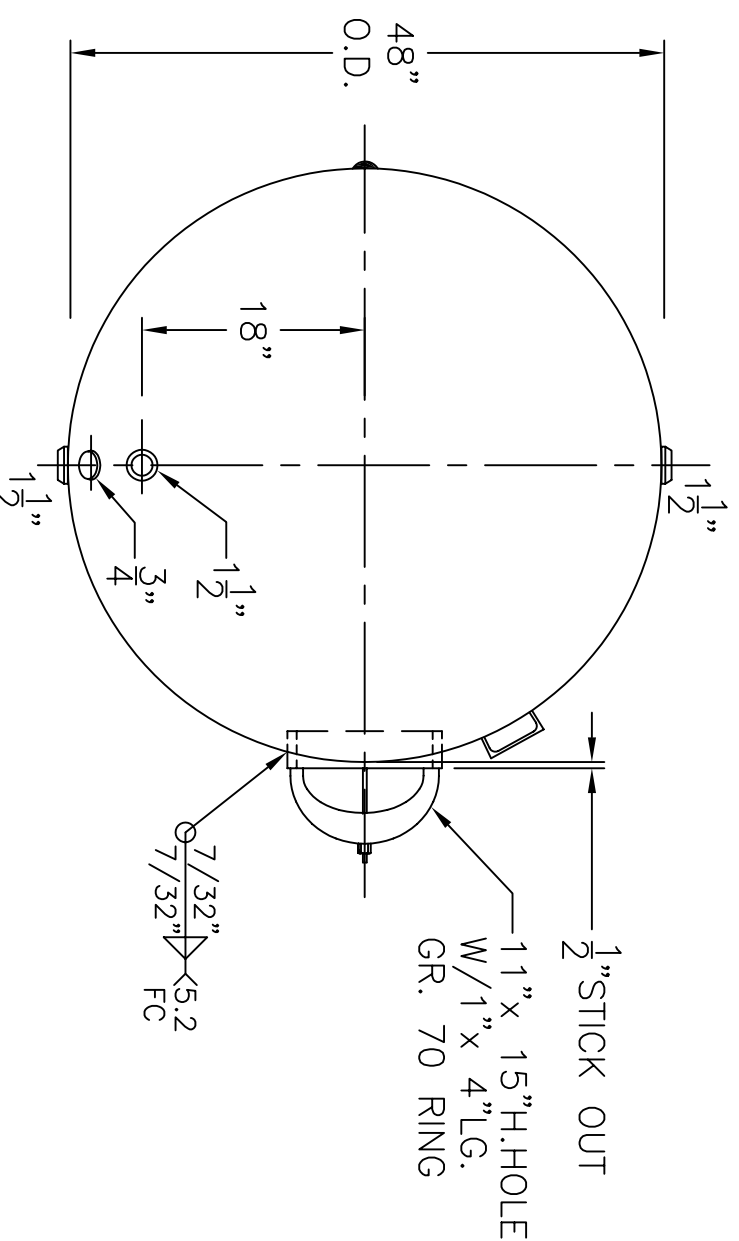
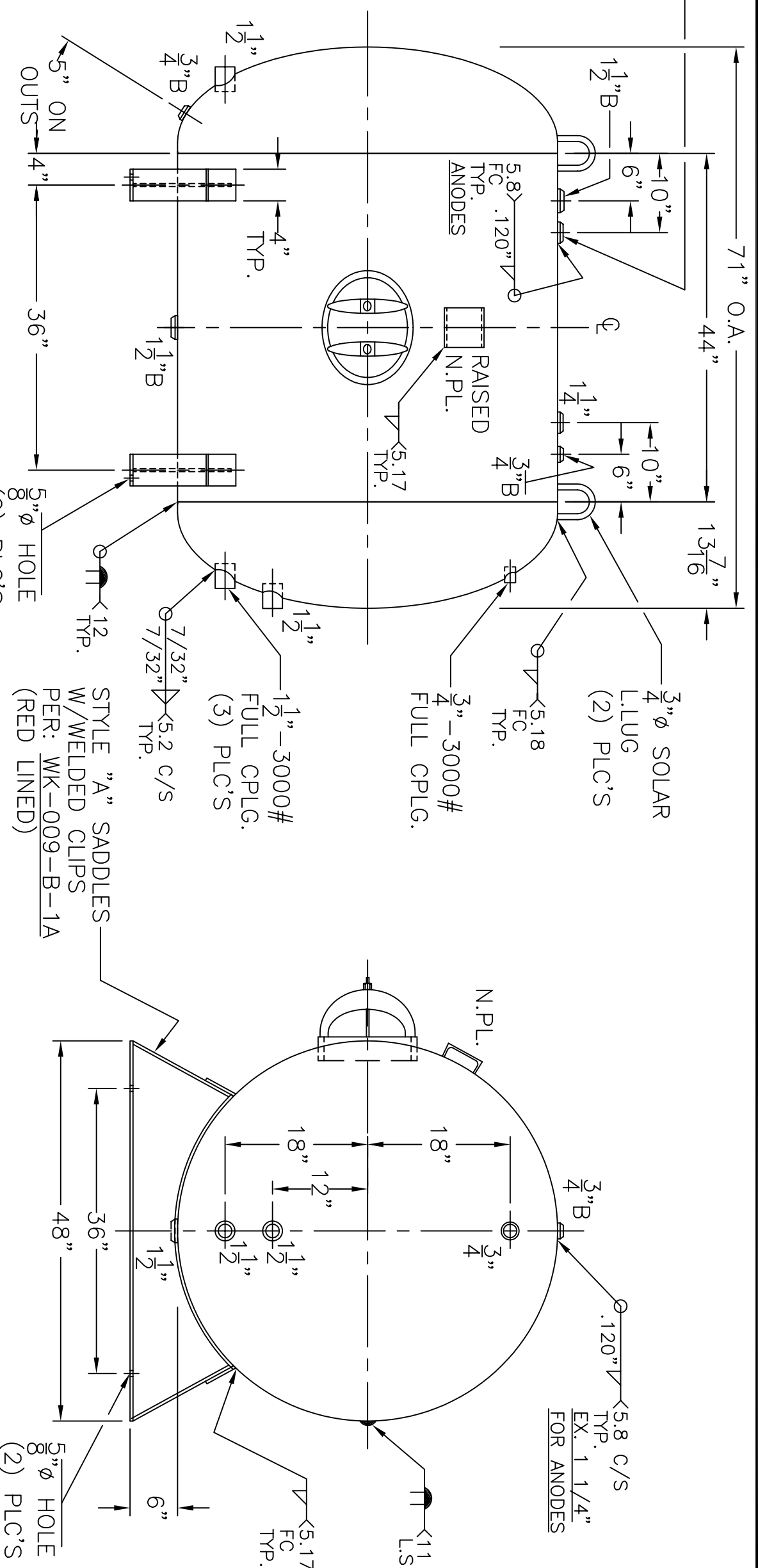


1 1/4" B  
FOR ANODE  
CARBON STL.  
(2) PLC'S



VIEW W/OUT SUPT'S

- NOTE: 1) HYDRO TEST @ 188 PSIG. MIN. TO 197 PSIG. MAX.  
 2) SHIP LOOSE W/(2) 1 5/16" x 36" LG. FLEX. MAG. ANODE.  
 3) ALL FNPT SA-182-304 S.S. EX. 1 1/4" ANODES. C.S.

STYLE "A" SADDLES  
 W/WELDED CLIPS  
 PER: WK-009-B-1A  
 (RED LINED)

SHELL / HEADS		.245" SA-455 2:1 S.E.	
JOGGLE			
.205" SA-455			
M.A.W.P.		125 PSIG. @	210°F
ASME. SECTION IV 2010 ADD 2010			
X-RAY:		RT-NO / H.L.W.	
GALLONS:		480	WT. 1156 LBS.
SERIAL NO.			
N.B.			
FOR: -		WN-162-B	
HORIZ. HOT WATER TANK.		REV. 2-14-11	
SURFACE AREA = 83.9 SQ. FT.		DATE: 2-7-11	
INSIDE: GLASS LINED			
OUTSIDE: S.BLAST, PRIME			
BY: J.G./C.J.		SCALE: 3/4"=12"	
<b>ROY E. HANSON JR. MFG.</b>			
1600 E. WASHINGTON BLVD.			
LOS ANGELES, CA 90091			