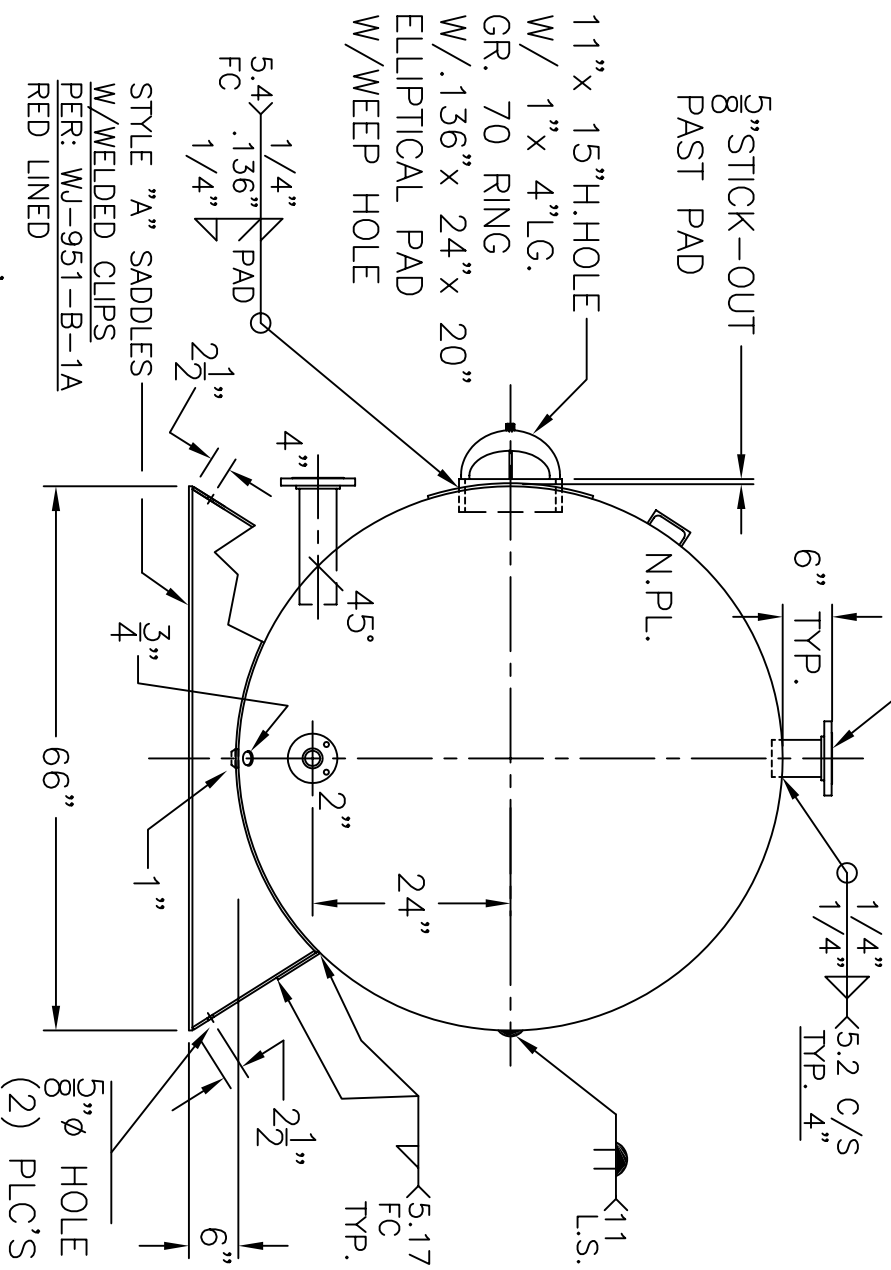


VIEW W/OUT SUPT.

4" - 150# R.F.S.O. C/S  
FLAG. W/SCH 80 S.S.  
ERW PIPE x 7 5/16" LG.



- NOTE. 1) HYDRO @ 188 PSIG. MIN. TO 197 PSIG. MAX.  
 2) SHIP LOOSED W/(3) 1 5/16" x 48" LG. FLEX. MAG. ANODES.  
 3) 3-26-04 PROOF TEST.  
 4) PIPES SA-312-304 ERW S.S.  
 5) INSTALL ALL FLAG'S IN SHELL AFTER G.S. ARE WELDED.

SHELL / HEADS	.250" SA-455	2:1 S.E.	WN-247-B	REV. 6-1-11
	(.217" MIN.)			DATE: 5-31-11
	.248" SA-455			
M.A.W.P.	125 PSIG. @	210 °F		
ASME SECT.	IV	2010 ADD 2010		
X-RAY:	RT-NO/H.L.W.			
GALLONS:	1200	WT. 2397 LBS.		
SERIAL NO.				
N.B.				
FOR:	HORIZ. HOT WATER TANK			
SURFACE AREA	= 153.0 SQ. FT.			
INSIDE:	GLASS LINED			
OUTSIDE:	S.BLAST, PRIME & R-16			
	"PERALTA" TANK			
BY: J.G./C.J.	SCALE: 1/2"=12"			
<b>ROY E. HANSON JR. MFG.</b>				
1600 E. WASHINGTON BLVD.				
LOS ANGELES, CA 90021				