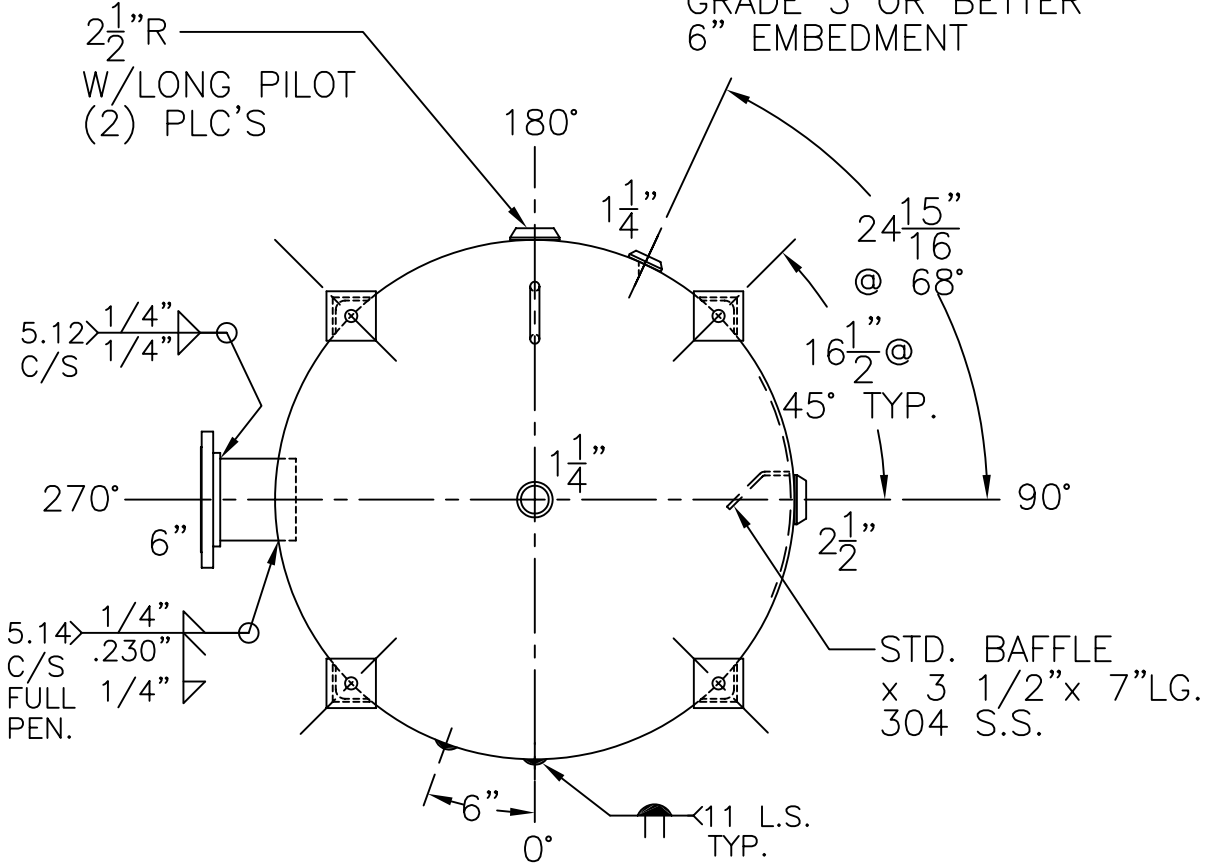


6"-150# R.F.S.O. C.S.  
 FLG. W/SCH 40  
 SA-312-304 S.S.  
 ERW PIPE x 7 5/8" LG.  
 (FOR BUNDLE)

NOTE: 1) SHIP LOOSE W/(1) 1 5/16" x 84" LG. FLEX. MAG. ANODE.  
 2) HYDRO @ 240 PSIG.  
 3) INSTALL (1) 1 5/16" x 24" LG. RIGID MAG. ANODE 5" ABOVE G.S.

(4) 3" x 3" x 1/4" THK. x 23 13/16" LG. ANGLE LEG  
 (4) 4" x 4" x 3/8" THK. PAD W/ 7/8" Ø HOLE FOR 5/8" Ø x 8" LG. BOLTS GRADE 5 OR BETTER 6" EMBEDMENT



SHELL / HEADS		.205" SA-455 2:1 S.E.	
JOGGLE			
.230" SA-455			
M.A.W.P. 160 PSIG. @ 210 °F			
ASME SECTION IV 2010 ADD 2010			
X-RAY: RT-NO / H.L.W.			
GALLONS: 534 WT. 1145 LBS.			
SERIAL NO.			
N.B.			
FOR: -		WN-191-B	
VERT. HOT WATER TANK		REV. DATE: 3-15-11	
SURFACE AREA = 94.4 SQ. FT.			
INSIDE: GLASS LINED			
OUTSIDE: SHOP PRIME & R-16 FOAM			
LEG-ZONE 3-15 KM.			
BY: J.G./STEVE SCALE: 3/4"=12"			
ROY E. HANSON JR. MFG.			
1600 E. WASHINGTON BLVD.			
LOS ANGELES, CA 90021			