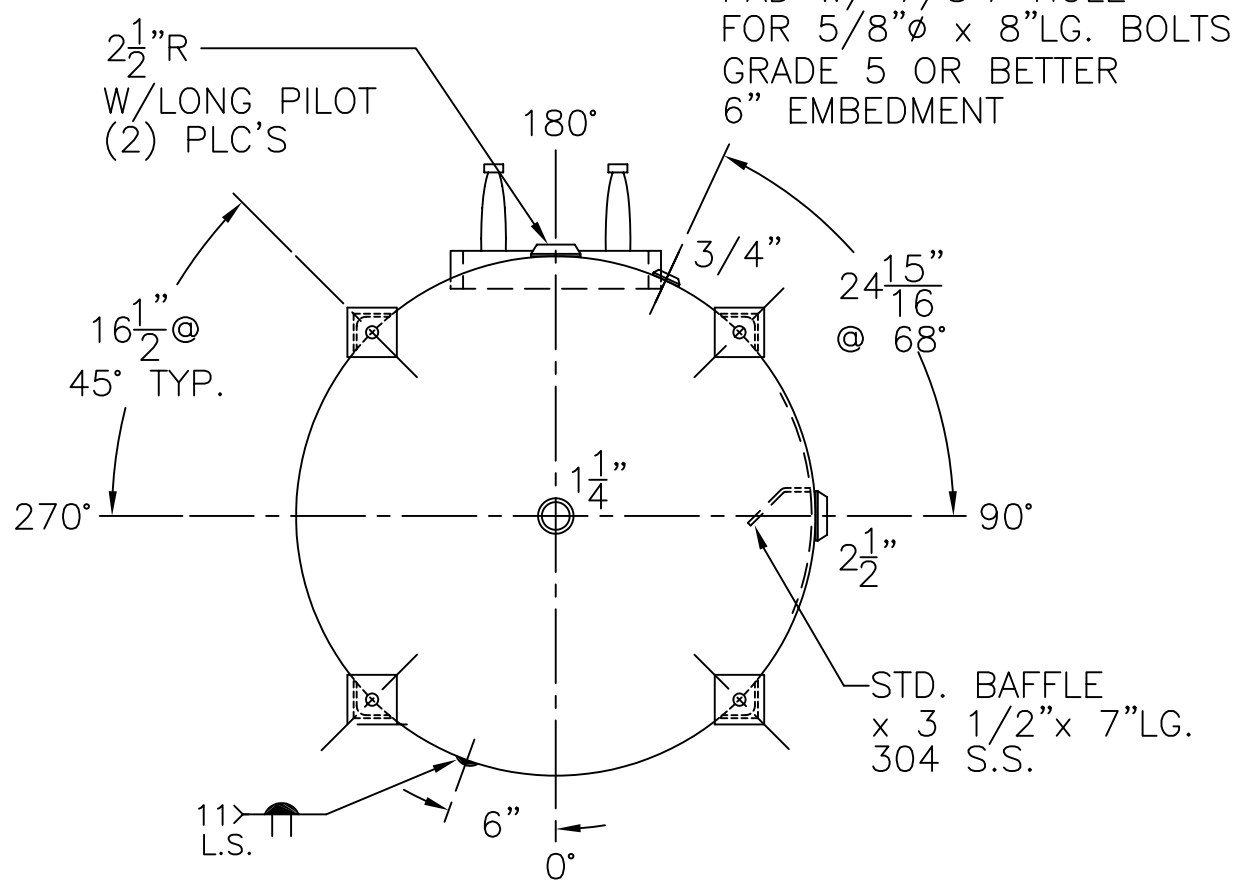


(4) 3"x 3"x 1/4" THK. x 21 1/8" LG. ANGLE LEG

(4) 4"x 4"x 3/8" THK. PAD W/ 7/8" Ø HOLE FOR 5/8" Ø x 8" LG. BOLTS GRADE 5 OR BETTER 6" EMBEDMENT



NOTE: 1) SHIP LOOSE W/(1) 1 5/16" x 72" LG. FLEX. MAG. ANODE.  
 2) 240 PSIG. HYDRO.  
 3) 4-1-04 PROOF TEST.

SHELL / HEADS		.205" SA-455 2:1 S.E.	
JOGGLE			
M.A.W.P. 160 PSIG. @ 210 °F			
ASME SECTION IV 2010 ADD 2010			
X-RAY: RT-NO / H.L.W.			
GALLONS: 462 WT. 868 LBS.			
SERIAL NO.			
N.B.			
INSIDE: GLASS LINED		DATE: 12-1-99	
OUTSIDE: PRIME		REV. 3-30-11	
VERT. WATER TANK		FOR: HANSON STANDARD	
SURFACE AREA = 82.8 SQ. FT.		DATE: 12-1-99	
LEG-ZONE 4-15 KM.		BY: J.G.	
SCALE: 3/4" = 12"		SCALE: 3/4" = 12"	
ROY E. HANSON JR. MFG.		ROY E. HANSON JR. MFG.	
1600 E. WASHINGTON BLVD.		1600 E. WASHINGTON BLVD.	
LOS ANGELES, CA 90021		LOS ANGELES, CA 90021	

GS-42-462-V